



# London

in collaboration with VisitLondon.com

Photo:



London is the cultural, political and economic heart of Britain, famous for world-class museums, galleries, royal palaces, shopping destinations, West End theatre shows and award-winning restaurants.

Visiting London? Start planning your trip right here, from booking your accommodation to creating your perfect itinerary. Whether you want to stay in a 5-star luxury hotel and sip Champagne on the London Eye, or find a cheap hostel and stroll in one of London's beautiful Royal Parks, you'll find something to suit your budget and interests.



**New App  
Out Now**

**On iPhone And Android**



## Top 5



### Top Attractions

There are plenty of the UK's best attractions in London. See London from abo...



### West End Theatre

London has the best theatre scene in the world and is even more popular than...



### Iconic Skyline

London's famous skyline continues to evolve. The Shard - Western Europe's ta...



### The Best Shopping

If it's retail therapy you're need, you will be spoilt for choice when shopp...



### Plenty of Green Space

Sometimes in the city it's nice to escape all the hustle and bustle. London ...



## THE CITY



London is a world-class city and the heart of British politics, culture and commerce. Its history stretches back thousands of years, and remnants of this fascinating past can still be found across the capital – from the Tower of London, a gruesome site of Medieval torture, to the majestic Buckingham Palace.

A captivating mix of old and new, London is also renowned for its creativity, innovation and originality in art, theatre, music, design and cuisine. It is home to countless art galleries and museums, including the Tate Modern, National Gallery and British Museum, which possesses some of the world's finest treasures. And best of all, entry to most of these museums and galleries is free!

To catch all the 'big-hitters' in one go, you can't beat a walk along the River Thames. Strolling from Tower Bridge to the Houses of Parliament you'll pass the Tower of London, Shakespeare's Globe, Tate Modern, the Southbank Centre, the National Theatre, the London Eye, the SEA LIFE London Aquarium and London Dungeon. Phew!

The West End is the place to go to see London's top theatre shows and musicals. Alongside classics including *Les Misérables*, *Phantom of the Opera* and *The Woman in Black*, you'll find hit contemporary shows, such as *Billy Elliot*, *The Lion King* and *Thriller – Live*. But don't forget to explore the many off-West End venues too, such as the National Theatre, The Old Vic and (during the summer months) Regent's Park Open Air Theatre.

In the West End you'll also find some of London's top shopping destinations, from Oxford Street to Seven Dials. Different neighbourhoods are known for other unique opportunities for shopping: Notting Hill is renowned for its antiques and Portobello Market, Greenwich has an excellent arts and crafts market, while Westfield London City and Westfield Stratford are the city's most famous malls.

If you'd rather save money than spend it, the eight Royal Parks are well worth a visit – and a great spot for a picnic. Visit Greenwich Park to drop in on the Royal Observatory, walk through Kensington Gardens to see Kensington Palace, take a paddle on the Hyde Park boating lake, see Buckingham Palace from scenic St James's Park, spot deer at Richmond Park and Bushy Park, and meet the animals at London Zoo, which lies within Regent's Park.

Along the way indulge your taste buds with delicious food at one of London's many restaurants, gastropubs and pop-up eateries. You can eat food prepared by a celebrity chef, discover modern British cuisine, or eat food from anywhere in the world – be it Indian, Chinese, Persian, Greek, Italian or Lebanese. Then top it off with a fancy cocktail, excellent wine or locally brewed beer at a top London pub or bar – and maybe a boogie at one of the capital's buzzing nightspots and clubs.

## ArrivalGuides goes ArrivalTV!



Get inspired and watch unique destination videos straight from our destination partners

[www.youtube.com/Arrivalguides](http://www.youtube.com/Arrivalguides)  
[www.dailymotion.com/ArrivalTV](http://www.dailymotion.com/ArrivalTV)



### EVENTS NOT TO BE MISSED



London has a full calendar of events, covering many different interests. This guide highlights the must-see events that take place in London throughout the year.

#### New Year's Eve



On 31 December, a spectacular New Year's Eve fireworks display takes place at the London Eye next to the River Thames. As the "bongs" of the famous Big Ben ring out

at midnight, the UK's biggest annual fireworks display welcomes in the new year. The 2014 event is ticketed but there are various other places in London to find a good viewing position. The annual New Year's Day parade winds its way through the street of Central London the next day. Look out for acrobats, cheerleaders, musicians and dancers.

Address: The London Eye, Riverside Building, County Hall, Westminster Bridge Road, London SE1 7PB

Tickets: Free-to-enter tickets required for area next to the fireworks.

Internet: [www.visitlondon.com/things-to-do/event/27002385-mayors-new-years-eve-fireworks-at-the-london-eye](http://www.visitlondon.com/things-to-do/event/27002385-mayors-new-years-eve-fireworks-at-the-london-eye)

## Winter Wonderland



From 21 November 2014 to 4 January 2015, Hyde Park in Central London is home to this huge festive playground. Expect ice skating rinks, rides, Christmas markets, a 60m

high observation wheel, a Bavarian village, the Magical Ice Kingdom, Zippos Circus and Cirque Beserk.

Address: Hyde Park, London W2 2UH

Public Transport: Hyde Park Corner or Marble Arch on the Tube

Tickets: Free to enter

Internet: [www.visitlondon.com/things-to-do/event/8696953-winter-wonderland-in-hyde-park](http://www.visitlondon.com/things-to-do/event/8696953-winter-wonderland-in-hyde-park)

## Chinese New Year



Outside of Asia, London hosts the largest Chinese New Year celebration in the world. The next Chinese New Year falls on 19 February 2015, the Year of the Sheep. Various

events take place all over the city. Highlights include the free to enter, colourful parade filled with dragons and a free stage event in Trafalgar Square including artists and traditional food stalls.

Photo: Philippa Gedge

Tickets: Parade and Trafalgar Square show free to enter.

Internet: [www.visitlondon.com/things-to-do/event/4733685-chinese-new-year-2015-in-london](http://www.visitlondon.com/things-to-do/event/4733685-chinese-new-year-2015-in-london)

## Changing the Guard at Buckingham Palace



Changing the Guard or Guard Mounting involves an exchange of guard duties at Buckingham Palace. Watch the ceremony as one set of guards dressed in traditional

red tunics and bearskin hats takes over from another. You can also see the process at Horse Guards Arch on Horse

Guards Parade.

Address: Buckingham Palace, London SW1A 1AA

Public Transport: Green Park Tube station

Opening hours: 11.30am daily at Buckingham Palace. 11.00am (10.00am on Sundays) daily at Horse Guards Parade.

Tickets: Free to enter

Internet:

[www.visitlondon.com/things-to-do/event/8725947-changing-the-guard](http://www.visitlondon.com/things-to-do/event/8725947-changing-the-guard)

## British Summer Time Music Festival



The Barclaycard British Summer Time music festival takes place every year in Central London's Hyde Park. The week-long event covers many musical tastes, from

pop to rock to dance and hip hop. The acts so far confirmed for 2015 include Taylor Swift, The Who, Paul Weller, Ellie Goulding, Kaiser Chiefs and John Newman.

Address: Hyde Park, London, W2 2UH

Public Transport: Marble Arch, Hyde Park Corner, or Green Park

Opening hours: 26-27 June 2015

Internet:

[www.visitlondon.com/things-to-do/whats-on/music/music-festival](http://www.visitlondon.com/things-to-do/whats-on/music/music-festival)

## RHS Chelsea Flower Show



The world's greatest flower show takes place in West London over a four-day period. Each year is different from the last but the vibrant small gardens and horticultural

displays bring a splash of colour and scent to London's events calendar. Booking in advance is advisable.

Address: Royal Hospital Chelsea, Royal Hospital Road, Chelsea, London SW3 4SR

Opening hours: Daily from 19 May 2015 to 23 May 2015.

Tuesday-Friday, 8am-8pm. Saturday 8am-5:30pm

Tickets: £24-£69

Internet: [www.visitlondon.com/things-to-do/event/18219357-rhs-chelsea-a-flower-show-2015](http://www.visitlondon.com/things-to-do/event/18219357-rhs-chelsea-a-flower-show-2015)

### Buckingham Palace Summer Opening



Buckingham Palace is one of the only working royal palaces in the world and each summer the doors to the palace's collection are opened to the public. Inside you will find treasures such as paintings by Rembrandt, Rubens and Vermeer, Sèvres porcelain, and fine English and French furniture.

Address: Buckingham Palace, London SW1A 1AA

Opening hours: From 1 August 2015 to 27 September 2015.

Tickets: Adults, £19.75. Children (5-17), £11.25. Free entry for children under 5.

Internet: [www.visitlondon.com/things-to-do/event/27250576-buckingham-palace-summer-opening-2015](http://www.visitlondon.com/things-to-do/event/27250576-buckingham-palace-summer-opening-2015)

### Trooping the Colour



To celebrate The Queen's official birthday in June each year, the tradition of Trooping the Colour takes place on Horse Guards Parade and The Mall near Buckingham Palace.

The ceremony of military pomp and pageantry includes a flypast by the Royal Air Force and a procession led by Her Majesty.

Address: Horse Guards Parade, Whitehall, London SW1A 2AX

Opening hours: June 2015 (exact dates to be confirmed)

Internet:

[www.visitlondon.com/things-to-do/event/8974720-trooping-the-colour](http://www.visitlondon.com/things-to-do/event/8974720-trooping-the-colour)

### Notting Hill Carnival



Europe's biggest street festival takes place every August Bank Holiday weekend in West London. The huge Caribbean theme party takes place over three days with the main parade held on the Monday. Expect colourful floats,

costumed performers and lots of music.

Address: Notting Hill area, West London

Tickets: This is a free to enter event.

Internet: [www.visitlondon.com/things-to-do/event/9023471-notting-hill-carnival-2015](http://www.visitlondon.com/things-to-do/event/9023471-notting-hill-carnival-2015)

### Totally Thames Festival



In September, London's Totally Thames Festival celebrates the city's famous river over 30 days, spreading 42 miles, and more than 100 separate arts and cultural

events. In 2014 the festival was filled with walks, tours, tall ship regattas, theatre, cinema, and many other exciting ways to enjoy London, all taking place on or next to the River Thames.

Address: Various locations along the river

Opening hours: Throughout September

Internet: [totallythames.org](http://totallythames.org)

### Rugby World Cup



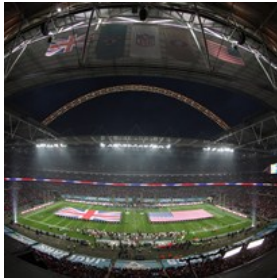
In 2015, players and fans from the world of rugby will gather in the UK to decide which team is the best. London will be hosting 17 matches, including the World Cup Final

at Twickenham Stadium. There will be 20 teams from around the globe including the legendary All Blacks from New Zealand, the Springboks from South Africa, as well as England, Italy, Ireland and France.

Address: Various locations

Internet: [www.visitlondon.com/things-to-do/event/29213002-rugby-world-cup-2015](http://www.visitlondon.com/things-to-do/event/29213002-rugby-world-cup-2015)

## NFL American Football



London's 90,000-capacity Wembley Stadium will host three games in the NFL International Series. In 2015 the teams that will be visiting London from the USA include

the Buffalo Bills, the Jacksonville Jaguars, the Detroit Lions, the Kansas City Chiefs, the New Yorks Jets and the Miami Dolphins.

Address: Wembley Stadium, Empire Way, Wembley, London, HA9 0WS

Public Transport: Wembley Park

Opening hours: 4 Oct, 25 Oct and 1 Nov 2015

Internet: [www.visitlondon.com/tag/nfl-london](http://www.visitlondon.com/tag/nfl-london)

## TOP 10 HOT TIPS



London is a diverse, exciting city filled with the world's best sights, attractions and activities. With such a broad range of choice, the hardest part is deciding what to do first. Here are 10 great reasons to love London.

### Top Attractions



There are plenty of the UK's best attractions in London. See London from above on the EDF Energy London Eye; come face to face with a celebrity at Madame

Tussauds; examine some of the world's most precious treasures at the British Museum; or meet a dinosaur at the Natural History Museum.

Internet: [www.visitlondon.com/things-to-do/sightseeing/tourist-attraction/top-ten-attractions](http://www.visitlondon.com/things-to-do/sightseeing/tourist-attraction/top-ten-attractions)

## West End Theatre

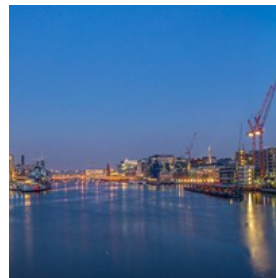


London has the best theatre scene in the world and is even more popular than New York's Broadway. It attracts the best acting talent the world has to offer so don't be surprised to

see a few famous faces on the London stage. Take your pick from long-running musicals, classic plays, or brand new works making their West End debut.

Internet: [www.visitlondon.com/things-to-do/whats-on/theatre](http://www.visitlondon.com/things-to-do/whats-on/theatre)

## Iconic Skyline



London's famous skyline continues to evolve. The Shard - Western Europe's tallest building - is the latest addition to the scene. There are plenty of places to view the iconic

skyline along the River Thames, but make sure you take in a panoramic view of London from up high at some point during your stay.

Internet: [www.visitlondon.com/tag/panoramic-view](http://www.visitlondon.com/tag/panoramic-view)

## The Best Shopping

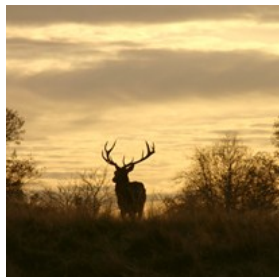


If it's retail therapy you're need, you will be spoilt for choice when shopping in London. From the flagship stores along Oxford Street; to bargain hunting in London's

street markets; to shopping in Europe's largest urban shopping centre at Westfield Stratford or paying a visit to the iconic department stores such as Harrods or Selfridges; shopping feels right in London.

Internet: [www.visitlondon.com/things-to-do/activities/shopping](http://www.visitlondon.com/things-to-do/activities/shopping)

## Plenty of Green Space



Sometimes in the city it's nice to escape all the hustle and bustle. London boasts eight beautiful Royal Parks, including Hyde Park, St James's Park and Richmond

Park. There's also Hampstead Heath which has amazing views over the city. Alternatively, visit one of London's peaceful gardens such as Kew or Chelsea Physic Garden.

Internet: [www.visitlondon.com/things-to-do/activities/openspace](http://www.visitlondon.com/things-to-do/activities/openspace)

## The River Thames and London's Canals



The river flows through Central London and provides a stunning backdrop to many of the city's top tourist attractions. River bus services and river cruises are great

ways to beat the traffic and enjoy wonderful views. Don't forget London's scenic canals either, including Regent's Canal and Little Venice.

Internet: [www.visitlondon.com/discover-london/london-areas/thames-river-and-waterways](http://www.visitlondon.com/discover-london/london-areas/thames-river-and-waterways)

## Top Sport



London attracts the biggest sporting events in the world. There are several top class football teams in London including Chelsea and Arsenal (where you can take a tour).

Queen Elizabeth Olympic Park has reopened and is ready for public use. Plus, let's not forget about Lord's Cricket Ground, Wimbledon Lawn Tennis Museum, and even some American NFL games at Wembley Stadium.

Internet: [www.visitlondon.com/things-to-do/whats-on/sport](http://www.visitlondon.com/things-to-do/whats-on/sport)

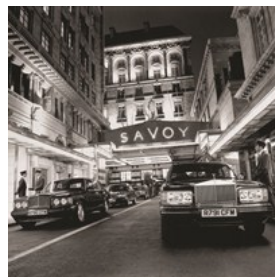
## Free Attractions



London is home to some of the best museums and galleries in the world – many of which are free. You can walk around the British Museum, Tate Modern, Natural History Museum or the Science Museum, amongst other, and browse the permanent collections at no cost.

Internet: [www.visitlondon.com/tag/free-attractions](http://www.visitlondon.com/tag/free-attractions)

## Accommodation Variety



There's accommodation to suit all budgets and tastes in London. The city has many famous luxury, 5-star hotels, but it is also a great place to find cheaper options too. Meet

other travellers at hostels; enjoy the comfort of a B&B; or try a spot of camping!

Internet: [www.visitlondon.com/where-to-stay](http://www.visitlondon.com/where-to-stay)

## Always Something New



It doesn't matter how many times you visit London, you'll never get bored. There's always something new, from a pop-up burger joint in East London, to a blockbuster exhibition at one of London's galleries, to an immersive theatre event in a secret location.

Internet: [www.visitlondon.com/things-to-do](http://www.visitlondon.com/things-to-do)

## WHAT TO SEE AND DO



London is full of things to see and do; from famous attractions such as the London Eye, the Houses of Parliament and Big Ben, the Tower of London and the Tate Modern; to great shopping opportunities; to wide open urban green spaces and much, much more.

Read on for inspiration and handy tips on the unmissable places to visit while you're in London. Many attractions on this list are to free to enter; another great reason to fall in love with London.

### The National Gallery



You can find hundreds of the most famous, beautiful and challenging paintings in the world at the National Gallery. Discover inspiring art by Leonardo da Vinci,

Michelangelo, Titian, Rembrandt, Vermeer, Turner, Monet and Van Gogh.

Address: Trafalgar Square  
Phone: +44 20 7747 2885  
Internet: [www.nationalgallery.org.uk](http://www.nationalgallery.org.uk)  
More Info: [information@ng-london.org.uk](mailto:information@ng-london.org.uk)

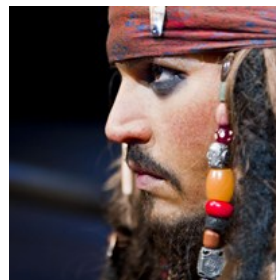
### The British Museum



One of the biggest and finest museums in the world, the British Museum is home to some of the most treasured historical artefacts in existence. The extensive exhibition include the Rosetta Stone, Assyrian treasures, the Egyptian mummies and the museum's spectacular, light-filled Great Court. A new restaurant has recently been opened in the Great Court; an ideal spot for afternoon tea under the magnificent roof. There are also free tours and guides to take advantage of at the museum.

Address: Great Russell Street, London  
Public Transport: Holborn, Tottenham Court Road, Russell Square, and Goudge Street Tube stations are all close by.  
Opening hours: Open daily 10.00-17.30, open late until 20.30 on Fridays.  
Phone: +44 20 7323 8000  
Tickets: Free (some temporary exhibitions are ticketed)  
Internet:  
[www.visitlondon.com/things-to-do/place/285709-british-museum](http://www.visitlondon.com/things-to-do/place/285709-british-museum)

### Madame Tussauds London



With more than 300 wax figures, the Marvel Super Heroes 4D movie experience and Spirit of London Taxi Ride, there's plenty to entertain at Madame Tussauds London.

The uncannily lifelike wax figures of famous (and infamous) individuals from throughout history are, of course, the highlight, with everyone from Johnny Depp and One Direction to The Queen and Muhammad Ali making an appearance.

Address: Marylebone Road, London  
Public Transport: Baker Street is the closest Tube station  
Tickets: Adult tickets: from £22.50 (advanced online price)  
Internet: [www.visitlondon.com/things-to-do/place/284875-madame-tussauds-london](http://www.visitlondon.com/things-to-do/place/284875-madame-tussauds-london)



## HM Tower of London



The Tower of London is one of the most famous fortified buildings in the world. It's also a mysterious place full of dark secrets, strange stories and historic relics. Here you can

admire the priceless Crown Jewels, explore the Medieval Palace, visit the infamous Bloody Tower, and go on a tour with a Yeoman Warder to learn about the many executions that took place here.

Address: Tower Hill, London

Public Transport: Tower Hill is the closest Tube station.

Opening hours: Tuesday-Saturday, 09.00-16.30. Sunday-Mon 10.00-16.30.

Phone: +44 20 3166 6000

Tickets: Adult tickets: £19.50. Child tickets: £9.75.

Internet:

[www.visitlondon.com/things-to-do/place/22249-hm-tower-of-london](http://www.visitlondon.com/things-to-do/place/22249-hm-tower-of-london)

## Hyde Park



Spread over 350 acres, Hyde Park is a green haven in the centre of London. The park is home to 4,000 trees, a large lake, a meadow and ornamental flower gardens,

not to mention a bustling programme of activities and events including horse riding, skating, cycling, swimming and boating. Highlights to look out for include the Serpentine Bridge, Joy of Life fountain, Achilles statue, Diana Memorial Fountain and Speaker's Corner.

Address: London

Public Transport: Lancaster Gate, Queensway, Marble Arch, Hyde Park Corner and Knightsbridge stations are all situated around the edge of Hyde Park.

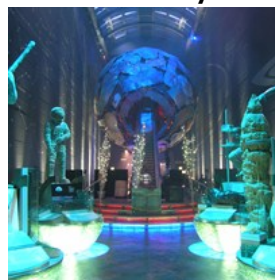
Opening hours: The park is open daily from 05.00-00.00

Phone: +44 300 061 2000

Tickets: Free

Internet: [www.visitlondon.com/things-to-do/place/610718-hyde-park](http://www.visitlondon.com/things-to-do/place/610718-hyde-park)

## Natural History Museum



The Natural History Museum houses hundreds of amazing exhibits from the natural world in one of London's most beautiful landmark buildings. Highlights include the popular

Dinosaurs gallery, the model blue whale, the Cocoon specimen centre and special events and debates in the Darwin Centre's high-tech Attenborough Studio, including a chance to meet the scientists.

Address: Cromwell Road, London

Public Transport: South Kensington Tube station is the closest

Opening hours: The museum is open daily 10.00-17.50

Phone: +44 20 7942 5000

Tickets: Free (some exhibitions have separate charges)

Internet: [www.visitlondon.com/things-to-do/place/427179-natural-history-museum](http://www.visitlondon.com/things-to-do/place/427179-natural-history-museum)

## St Paul's Cathedral



The 17th century St Paul's Cathedral on Ludgate Hill in the City of London is one of the city's most iconic buildings. It was designed by the illustrious Sir Christopher

Wren and it was the highest building in London until as late as 1962. Use the touch-screen multimedia guides, or take a guided tour, to learn about the famous interior or, if you're feeling fit, climb up to the Whispering Gallery (to try out the acoustics) and on towards the golden Gallery at the top of the dome where you'll be rewarded with amazing views across London. You can also descend into the crypt where you'll find memorials of heroes such as Admiral Lord Nelson.

Address: St Paul's Churchyard, London

Public Transport: St Paul's Tube station is close by. Alternatively, there are a number of buses that go through the area.

Opening hours: Open Monday-Saturday, 08.30-16.00.

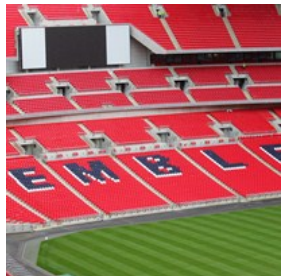
Phone: +44 20 7246 8350

Tickets: Adult tickets: £14.50. Child tickets: £6.

Internet:

[www.visitlondon.com/things-to-do/place/284990-st-pauls-cathedral](http://www.visitlondon.com/things-to-do/place/284990-st-pauls-cathedral)

## Wembley Stadium Tour



Relive those glory moments in sport and entertainment with a behind-the-scenes look through London's biggest stadium, Wembley. The tour walks you through the press room, the England football team changing rooms, through the players' tunnel, out onto the famous pitch, and up the Trophy Winner's steps to the Royal Box where you can stand alongside The FA Cup. A new section of the tour takes in the Exhibition of Champions, which takes a look at the 57 UEFA Champions League football finals from 1956 to 2012.

This is also the stadium where England won the 1966 World Cup and where the Live Aid concert took place in 1985.

Address: Empire Way, Wembley, London

Public Transport: Wembley Park Station is a 10 minute walk from the stadium.

Opening hours: 10.00-16.00 every day except 25 December, 26 December, 1 January, and before, during and immediate after major events.

Tickets: Adult tickets: £16. Child tickets: £9.

Internet: [www.visitlondon.com/things-to-do/place/4114851-wembley-stadium-tour](http://www.visitlondon.com/things-to-do/place/4114851-wembley-stadium-tour)

## Shakespeare's Globe Theatre



Shakespeare's Globe Theatre is a reconstruction of the original open-air theatre on the banks of the river Thames, where the playwright, William Shakespeare, first staged

many of his famous plays such as Romeo and Juliet, Hamlet, and Midsummer Night's Dream.

Located just a few hundred yards from its original site, today's Globe Theatre stages classic and modern interpretations of Shakespeare's work as well as brand-new plays. And at just £5 for a standing ticket, you can't lose! The exhibition has audio guides available in English, French, German, Spanish, Italian, and Japanese. There are expert guided tours as well every 30 minutes.

Address: 21 New Globe Walk, Bankside, London

Public Transport: Blackfriars, London Bridge and Mansion House are the nearest Tube stations

Opening hours: The theatre is open May-September. The exhibition and tour are open all year round except 24 and 25 December,

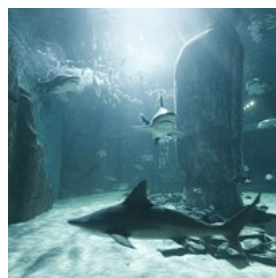
Monday-Sunday 09.00-17.30 (shorter hours from 6-30 March 2014).

Phone: +44 20 7401 9919

Tickets: From £5

Internet: [www.visitlondon.com/things-to-do/place/279599-shakespeare-s-globe-theatre](http://www.visitlondon.com/things-to-do/place/279599-shakespeare-s-globe-theatre)

## SEA LIFE London Aquarium



Located next to the London Eye along the South Bank, the SEA LIFE London Aquarium has one of Europe's largest collections of global marine life covering more than 500

species, 14 themed areas and two million litres of water. The exhibition includes favourites such as seahorses, octopus, zebra sharks and clown fish. It's also an interactive experience so you can feed the stingrays, see the sharks' feeding time, watch diving displays and go 'under the sea' in the glass tunnel walkway.

Address: County Hall, Westminster Bridge Road, London

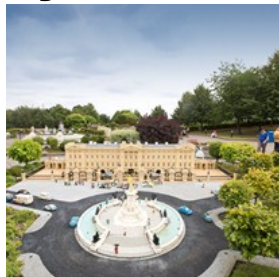
Public Transport: Waterloo station is roughly 5 minutes' walk away.

Opening hours: The aquarium is open 7 days a week (except Christmas Day), 10.00-19:00 (last entry 18.00).

Tickets: Adult tickets: £23.10. Child tickets: £16.50

Internet: [www.visitlondon.com/things-to-do/place/117322-sea-life-london-aquarium](http://www.visitlondon.com/things-to-do/place/117322-sea-life-london-aquarium)

## Legoland Windsor



Set in 150 acres of parkland, the LEGOLAND Windsor Resort is situated just outside London. It is home to more than 55 rides, shows, attractions and workshops, all

geared towards children up to 12 years of age. This theme park is a great place for a family day trip, but for fun seekers who wish to try everything the park has to offer over several days, you can stay at the Resort Hotel and enjoy its themed rooms. Inside the park you can get on board a Lego submarine, see London's iconic landscape in miniature form, test your skills at The Driving School, and get soaking wet on the water rides, to name just a few.

Address: Winkfield Road, Windsor, Berkshire

Public Transport: Take a train from London Paddington to Windsor & Eton Central via Slough, or from Waterloo to Windsor & Eton Riverside direct. A shuttle bus service operates from both stations to the park.

Opening hours: The park opens at 10.00 and closes 17.00 on weekdays, 18.00 on weekends, and 19.00 every day from the end of July to the end of August.

Tickets: Adult tickets: £46.60. Child tickets: £41.00. Children under 3 go free.

Internet:

[www.visitlondon.com/things-to-do/place/442389-legoland-windsor](http://www.visitlondon.com/things-to-do/place/442389-legoland-windsor)

## Hampton Court Palace



Hampton Court Palace was King Henry VIII's favourite royal residence, and is full of thrilling stories and beautiful sights. Inside you can explore the Medieval Great Hall where

William Shakespeare's company once performed, as well as the huge Tudor kitchens and the Haunted Gallery. The palace has much to see outdoors as well with a puzzling maze, beautiful gardens and large park to enjoy. Other highlights include daily costumed tours and talks, as well as the annual Hampton Court Palace Flower Show.

Address: East Molesey, Surrey

Public Transport: Hampton Court train station is just across the bridge.

Opening hours: The palace is open Mon-Sun 10.00-16.30 (last admission 15.30)

Phone: +44 20 3166 6000

Tickets: Adult tickets: £18.20. Child tickets: £9.10.

Internet:

[www.visitlondon.com/things-to-do/place/427279-hampton-court-palace](http://www.visitlondon.com/things-to-do/place/427279-hampton-court-palace)

## National Portrait Gallery



The National Portrait Gallery in Central London holds more than 195,000 portraits of famous men and women who have shaped British history from the 16th Century to the

present day. Sitters include kings, queens, film stars, politicians, musicians and many more, painted by acclaimed artists such as Holbein, David Hockney, Cecil Beaton and Lucian Freud. The gallery's rolling calendar of exhibitions is worth investigating as well, particularly the annual BP Portrait Awards.

Address: St Martin's Place, London

Public Transport: Charing Cross and Leicester Square Tube stations are both within 5 minutes' walk. There are also many buses that go through the area.

Opening hours: Sat-Wed 10.00-18.00, Thu-Fri 10.00-21.00

Phone: +44 207 306 0055

Tickets: Free (some exhibitions have separate charges)

Internet:

[www.visitlondon.com/things-to-do/place/95587-national-portrait-gallery](http://www.visitlondon.com/things-to-do/place/95587-national-portrait-gallery)

## Warner Bros. Studio Tour London - The Making of Harry Potter



Step into the magical world of Harry Potter and visit the film sets where the series was shot on Warner Bros. Studio Tour London - The Making of Harry Potter. On the tour you

can nosy around Dumbledore's office, enter the Great Hall, walk down Diagon Alley, see how the technical whizzes made Harry Potter fly, and watch special effect animatronics come to life. A must for fans of the world's

favourite boy wizard.

Address: Studio Tour Drive, Leavesden

Opening hours: 9.00/10.00-16.00/16.30 (depending on time of year)

Tickets: Advance purchased adult tickets: £59.00. Child tickets: £52.00.

These prices include return coach travel from Victoria and Baker Street (when booking through the visitlondon.com website)

Internet: [www.visitlondon.com/things-to-do/place/23035130-warner-bros-studio-tour-london-the-making-of-harry-potter](http://www.visitlondon.com/things-to-do/place/23035130-warner-bros-studio-tour-london-the-making-of-harry-potter)

## Museum of London



Discover the story of the world's greatest city at The Museum of London. The tale begins during prehistoric London, detailing the influence of the Romans and Saxons on

the city, and on towards Medieval London. Along the way you will encounter civil wars, deadly plague and rampant fires. Journey through the Galleries of Modern London, along Victorian streets, and on towards the lavish Lord Mayor's Coach display.

Address: 150 London Wall, City of London

Public Transport: Barbican, St Paul's or Moorgate Tube stations are only a few minutes on foot when exiting the station.

Opening hours: 10.00-18.00 every day except 24-26 December

Phone: +44 20 7001 9844

Tickets: This museum is free to enter.

Internet:

[www.visitlondon.com/things-to-do/place/97363-museum-of-london](http://www.visitlondon.com/things-to-do/place/97363-museum-of-london)

## WWT London Wetland Centre



The 105-acre WWT London Wetland Centre is a wildlife reserve on the outskirts of Central London. Here you will find plenty of rare birds, beautiful lakes, tranquil

gardens and calming meadows to walk amongst and admire, as well as other natural attractions worth spotting such as a family of otters. You can also take a free, expert-guided tour, chill out at the Water's Edge Café, and

watch the kids run free in the indoor and outdoor adventure areas.

Address: Queen Elizabeth's Walk, Barnes, London

Public Transport: From Hammersmith station take the number 283 bus which stops at the centre

Opening hours: The centre is open 7 days a week, except 25 December: 09.30-18.00 during the summer; 09.30-17.00 during the winter.

Phone: +44 20 8409 4400

Tickets: Adult tickets: £9.95. Child tickets: £5.50.

Internet: [www.visitlondon.com/things-to-do/place/7280-wwt-london-wetland-centre](http://www.visitlondon.com/things-to-do/place/7280-wwt-london-wetland-centre)

## Sherlock Holmes Museum



221b Baker Street is the official home of the famous fictional detective Sherlock Holmes, who lived here from 1881 to 1904, according to the books written by Sir Arthur

Conan Doyle. The museum features Holmes' detailed study, life-size waxworks representing scenes from Holmes and Watson's adventures, and a souvenir shop.

Address: 221b Baker Street, London

Public Transport: Baker Street is the closest Tube station

Opening hours: Open every day of the year (except Christmas Day) from 09.30-18.00

Phone: +44 207 224 3688

Tickets: Adult tickets: £8. Child tickets: £5.

Internet: [www.visitlondon.com/things-to-do/place/48930-sherlock-holmes-museum](http://www.visitlondon.com/things-to-do/place/48930-sherlock-holmes-museum)

## City Cruises



See London from a different angle by taking a cruise along the famous River Thames. City Cruises offer frequent sightseeing trips between Westminster, Waterloo (next

to the EDF Energy London Eye), Tower and Greenwich piers. Options include tea-time cruises, evening cruises, a jazz cruise and The London Showboat, a dinner/cabaret/dance cruise.

Address: Victoria Embankment, Westminster, London  
Opening hours: The cruises are available every day except 25 December.  
Phone: +44 20 7740 0400  
Tickets: Adult tickets: from £12.00. Child tickets: from £6.00.  
Internet: [www.visitlondon.com/things-to-do/place/209815-city-cruises](http://www.visitlondon.com/things-to-do/place/209815-city-cruises)

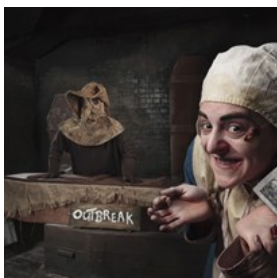
### The Victoria and Albert Museum



The Victoria and Albert Museum in Kensington has a breathtaking collection of design and art, ranging from Islamic art, to fine European jewellery, to famous watercolours by artists such as John Constable, and iconic fashion creations by Vivienne Westwood. Explore the permanent collection or visit one of the museum's world-class, and always popular, temporary exhibitions. Look out for the quirky Friday Lates events that happen on the last Friday of every month.

Address: Cromwell Road, London  
Public Transport: South Kensington Tube station is the closest  
Opening hours: Sat-Thu 10.00-17.45, Fri 10.00-22.00  
Phone: +44 20 7942 2000  
Tickets: Free (some exhibitions have a separate charge)  
Internet: [www.visitlondon.com/things-to-do/place/209165-victoria-and-albert-museum](http://www.visitlondon.com/things-to-do/place/209165-victoria-and-albert-museum)

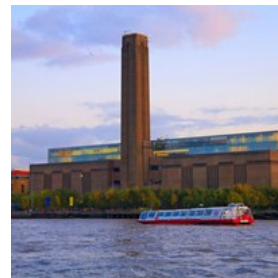
### The London Dungeon



London's history is filled with gruesome tales and scary characters. The new London Dungeon attraction on the south bank of the Thames retells some of those bloody stories. Using live costume, 360° sets and a multitude of special effects, The London Dungeon takes you through 1000 years of London's gory past in 90 terror-filled minutes. Look out for Jack the Ripper and Sweeney Todd along the way, as well as two underground thrill-seeking rides. This is not an attraction for those of a nervous disposition.

Address: County Hall, Riverside Building, London  
Public Transport: Waterloo station is a 5 minute walk away. This station is served by various Tube line as well as train services. There are also many London buses that go through the area.  
Opening hours: The London Dungeon is open 7 days a week, every day of the year, except Christmas Day. Opening hours vary throughout the year.  
Phone: +44 20 7403 7221  
Tickets: Adult tickets: £21.00. Child tickets: £16.00.  
Internet: [www.visitlondon.com/things-to-do/place/427295-london-dungeon](http://www.visitlondon.com/things-to-do/place/427295-london-dungeon)

### Tate Modern



Housed in a vast former power station, Tate Modern is Britain's leading gallery of contemporary and modern art. As well as its eagerly anticipated showcase exhibitions, there's a fantastic permanent collection to explore, which features artists as diverse as Matisse, Picasso, Rothko, Pollock, Warhol and Bourgeois.

Address: Bankside, London  
Public Transport: Southwark and Blackfriars stations are nearby.  
Opening hours: Sun-Thu 10.00-18.00, Fri-Sat 10.00-22.00 (except 24-26 December)  
Phone: +44 20 7887 8888  
Tickets: Free (some temporary exhibitions are ticketed)  
Internet: [www.visitlondon.com/things-to-do/place/344410-tate-modern](http://www.visitlondon.com/things-to-do/place/344410-tate-modern)

### Houses of Parliament



The majestic Houses of Parliament are at the heart of British politics, and have been the site of many a political debate, trial and drama over the years. Guided tours of the

Houses of Parliament take place on Saturdays all year round, and from Tuesday to Saturday during the summer opening. UK visitors can request a free guided tour through their MP.

Address: Parliament Square, London  
Public Transport: Westminster Tube station is directly across the road.

There are also many buses that go through the area.

Opening hours: Open during summer months and on Saturdays year-round. Check with venue for dates and times

Phone: +44 20 7219 3000

Tickets: Adult tickets: £16.50

Internet:

[www.visitlondon.com/things-to-do/place/401836-houses-of-parliament](http://www.visitlondon.com/things-to-do/place/401836-houses-of-parliament)

## RESTAURANTS



Thanks to London's rich mix of cultures, the capital's restaurants serve up delicious food from all corners of the globe. Whatever cuisine you fancy, you're sure to find it in London – be it Chinese, Japanese, Korean, Caribbean, Polish, French, Italian, Afghan, Ethiopian, American, Spanish, South African, Persian... the list goes on.

There's also an exciting buzz on the British culinary scene in London, with innovative chefs rethinking traditional British classics and creating new favourites – all with an emphasis on fresh, local produce.

Plus with Michelin-starred restaurants, family-friendly eateries, cosy gastropubs, fast food joints and quirky cafes dotted all over the city, there's something for every budget too.

### Rainforest Cafe



Rainforest Cafe brings the sights and sounds of the jungle to London's famous Piccadilly Circus, with elephants, gorillas, jaguars, crocodiles, butterflies, tropical

fish tanks, an indoor waterfall and roaring thunderstorm sounds. Feeding time is a fun, family-friendly affair, with steaks, burgers, pasta and salads on the menu.

Address: Rainforest Cafe, 20 Shaftesbury Avenue, London W1D 7EU

Public Transport: Piccadilly Circus

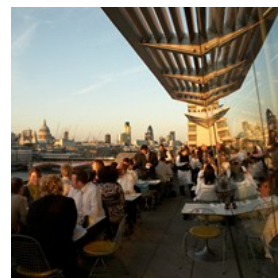
Opening hours: Mon-Fri 12:00-22:00, Sat 11:30-22:30, Sun 11:30-22:00

Phone: +44 20 7434 3111

Internet:

[www.visitlondon.com/things-to-do/place/3904914-rainforest-cafe](http://www.visitlondon.com/things-to-do/place/3904914-rainforest-cafe)

### OXO Tower Restaurant, Bar and Brasserie



Dine in true British style with a beautiful raised view across the River Thames. This restaurant, bar and brasserie is a great place for a romantic meal, especially when

combined with a casual stroll along the South Bank before and after your meal. Book ahead to make sure you get an alfresco table on the outdoor terrace and enjoy the scene with St Paul's Cathedral in the background. You can also expect to enjoy live jazz in the brasserie.

Address: Barge House Street, Oxo Tower Wharf, South Bank, London, SE1 9PH

Public Transport: Blackfriars station

Phone: +44 (0)20 7803 3888

Internet: [www.visitlondon.com/things-to-do/place/606948-oxo-tower-restaurant-bar-and-brasserie](http://www.visitlondon.com/things-to-do/place/606948-oxo-tower-restaurant-bar-and-brasserie)

### Masala Zone - Bayswater



Colourfully decorated with Indian folk art and collages of firecracker labels, the Bayswater branch of Masala Zone is as warm and welcoming as the other

restaurants in this growing chain. The menu takes inspiration from Indian street food and home-cooked dishes, with Indian grills and regional curries as well as tapas-style Thali platters.

Address: 75 Bishops Bridge Road, Bayswater, London, W2 6BG  
Public Transport: Royal Oak, Bayswater  
Opening hours: Mon-Fri 12:30-15:00 and 17:30-23:00, Sat 12:30-23:00, Sun 12:30-22:30  
Phone: +44 20 7221 0055  
Internet: [www.visitlondon.com/things-to-do/place/5795059-masala-zone-bayswater](http://www.visitlondon.com/things-to-do/place/5795059-masala-zone-bayswater)  
More Info: Located at the corner of Bishops Bridge Road and Inverness Terrace

### Mestizo Mexican Restaurant & Tequila Bar



Colourful and welcoming, Mestizo Mexican Restaurant and Tequila Bar serves quality, traditional Mexican cuisine. Downstairs from the relaxing restaurant you'll also find a

stylish tequila bar serving cocktails, tequila and 'antojitos' (Mexican tapas).

Address: Mestizo, 103 Hampstead Road, London, NW1 3EL  
Public Transport: Euston, Euston Square, Warren Street  
Opening hours: Mon-Sat 12:00-23:00, Sun 12:00-22:30  
Phone: +44 20 7387 4064  
Internet: [www.visitlondon.com/things-to-do/place/2145103-mestizo-mexican-restaurant-and-tequila-bar](http://www.visitlondon.com/things-to-do/place/2145103-mestizo-mexican-restaurant-and-tequila-bar)

### Inamo



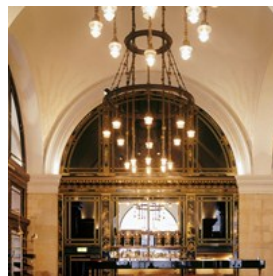
Inamo is a pioneering Oriental fusion restaurant and bar where the control of the dining experience is placed firmly in your own hands, thanks to an interactive ordering system.

Instead of reading a long list of dish names, you simply pick your favourite from an illustrated food and drinks menu projected onto your table surface. The pan-Asian menu includes influences from Japan, China, Thailand, Korea and beyond.

Address: Inamo, 134-136 Wardour Street, Soho, London W1F 8ZP  
Public Transport: Tottenham Court Road, Oxford Circus  
Opening hours: Mon-Wed 17:00-23:30, Thu 12:00-15:00 and 17:00-23:30, Fri-Sat 12:00-00:00, Sun 12:00-22:30

Phone: +44 20 7851 7051  
Internet: [www.visitlondon.com/things-to-do/place/4394204-inamo](http://www.visitlondon.com/things-to-do/place/4394204-inamo)

### The Wolseley



Housed in a former car showroom on Piccadilly, The Wolseley is an elegant café-restaurant inspired by the grand European style of years gone by. The food follows the same classic European thread, with favourite dishes including veal Holstein and chicken soup with dumplings. Pop in for breakfast, lunch, afternoon tea, dinner... any meal you fancy.

Address: The Wolseley, 160 Piccadilly, London W1J 9EB  
Public Transport: Green Park  
Opening hours: Mon-Fri 07:00-00:00, Sat 08:00-00:00, Sun 08:00-23:00  
Phone: +44 20 7499 6996  
Internet: [www.visitlondon.com/things-to-do/place/5251-wolseley](http://www.visitlondon.com/things-to-do/place/5251-wolseley)

### Restaurant Gordon Ramsay



If the name alone doesn't sell it, the three Michelin stars that Restaurant Gordon Ramsay was honoured with should. Located in affluent Chelsea, the restaurant serves up modern French food in an elegant, intimate atmosphere - under the masterly gaze of head chef Clare Smyth.

Address: Restaurant Gordon Ramsay, 68 Royal Hospital Road, London SW3 4HP  
Public Transport: South Kensington, Sloane Square  
Opening hours: Mon-Fri 12:00-14:15 and 18:30-22:15  
Phone: +44 20 7352 4441  
Internet: [www.visitlondon.com/things-to-do/place/394339-restaurant-gordon-ramsay](http://www.visitlondon.com/things-to-do/place/394339-restaurant-gordon-ramsay)

## No.20



Located on the ground floor of the stylish Sanctum Soho Hotel, No.20 serves modern, seasonal British cuisine from breakfast through afternoon tea to dinner. A bar as well as

a restaurant, it's also a good spot for a coffee, evening cocktail or glass of wine.

Address: 20 Warwick Street, Soho, London W1B 5NF

Public Transport: Oxford Circus, Piccadilly Circus

Opening hours: Mon-Sat 06:30-23:00, Sun 07:00-17:00

Phone: +44 20 7292 6102

Internet: [www.visitlondon.com/things-to-do/place/35658066-no-20-at-sanctum-soho-hotel](http://www.visitlondon.com/things-to-do/place/35658066-no-20-at-sanctum-soho-hotel)

More Info: Located inside Sanctum Soho Hotel

## Fifteen London



Rustic yet elegant modern British food is the focus at Jamie Oliver's East London restaurant Fifteen. Under the helm of Jon Rotheram, the restaurant uses top British

meat and fish (butchered and prepared on site every day) and fresh ingredients to create delicious dishes such as grilled plaice, Jerusalem artichoke & brown shrimp; Lindisfarne oysters, sweet & sour apple vinaigrette; and Chocolate & malt mousse.

Address: Fifteen, 15 Westland Place, London N1 7LP

Public Transport: Old Street

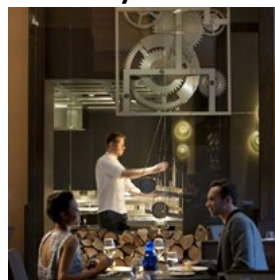
Opening hours: Daily 12:00-15:00 and 18:00-22:00

Phone: +44 20 3375 1515

Internet:

[www.visitlondon.com/things-to-do/place/606802-fifteen-london](http://www.visitlondon.com/things-to-do/place/606802-fifteen-london)

## Dinner by Heston Blumenthal



Heston Blumenthal's Knightsbridge restaurant Dinner is known for its inventive menu of historically inspired British dishes. Choose from dishes such as Earl Grey

Tea cured Salmon (c.1730), Spiced Pigeon (c.1780) and Topsy Cake (c.1810) - or let the chef do the choosing by going for the Set Lunch Menu or splashing out on a seat at the Chef's Table, which directly faces the restaurant's custom-built show kitchen.

Address: Dinner by Heston Blumenthal, Mandarin Oriental Hyde Park, 66

Knightsbridge, London SW1X 7LA

Public Transport: Knightsbridge

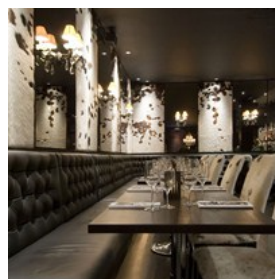
Opening hours: Daily 12:00-14:30 and 18:30-22:30

Phone: +44 20 7201 3833

Internet: [www.visitlondon.com/things-to-do/place/475171-dinner-by-heston-blumenthal](http://www.visitlondon.com/things-to-do/place/475171-dinner-by-heston-blumenthal)

More Info: Located inside Mandarin Oriental Hyde Park hotel

## Gaucho - Piccadilly



The glitzy Piccadilly branch of Argentinian restaurant Gaucho is spread over four floors.

Alongside the main restaurant is the Cavas De Gaucho wine boutique, a ground-floor wine bar and a supper lounge on the top floor. Steaks, of course, are high on the menu - but there are many other dishes to try too, from Ecuadorian ceviche to Scamorza and potato ravioli.

Address: Gaucho, 25 Swallow Street, London W1B 4QR

Public Transport: Piccadilly Circus, Green Park

Opening hours: Mon-Sat 12:00-00:00, Sun 12:00-23:00

Phone: +44 20 7734 4040

Internet:

[www.visitlondon.com/things-to-do/place/401386-gaucho-piccadilly](http://www.visitlondon.com/things-to-do/place/401386-gaucho-piccadilly)

More Info: Located close to Regent Street, W1



### Sketch



Sketch is an eccentric, original and elegant venue off Regent Street founded by French master chef Pierre Gagnaire and restaurateur Mazouz. The unique space comprises five dining areas: The Parlour patisserie and restaurant, The Glade bar, The Gallery brasserie, the two Michelin-starred Lecture Room & Library dining room and The East Bar.

Address: Sketch, 9 Conduit Street, Mayfair, London W1S 2XG  
Public Transport: Oxford Circus, Piccadilly Circus  
Opening hours: Daily (see website for times)  
Phone: +44 20 7659 4500  
Internet: [www.visitlondon.com/things-to-do/place/2290897-sketch-lecture-room-and-library](http://www.visitlondon.com/things-to-do/place/2290897-sketch-lecture-room-and-library)

### Porters English Restaurant

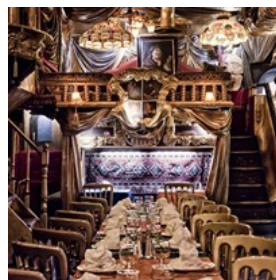


Porters English Restaurant is located in bustling Covent Garden and serves good, traditional English food in relaxed surroundings. On the menu of this popular

restaurant you'll find classical dishes such as Steak, Guinness and Mushroom Pie; Toad in the Hole and Spotted Dick.

Address: Porters, 17 Henrietta Street, Covent Garden, London WC2E 8QH  
Public Transport: Covent Garden, Leicester Square  
Opening hours: Sun-Tue 12:00: 22:30, Wed-Thu 12:00-23:00, Fri-Sat 12:00-23:30  
Phone: +44 20 7836 6466  
Internet: [www.visitlondon.com/things-to-do/place/6327652-porters-english-restaurant](http://www.visitlondon.com/things-to-do/place/6327652-porters-english-restaurant)

### Sarastro



Sarastro is renowned for its flamboyant interior - part stage set, part old curiosity shop. Taking a nod from the nearby West End theatres, the dining room features opera boxes, luxuriant velvet tablecloths and cosy booths. The menu is Mediterranean and live shows regularly take place, with live opera on Sundays and Mondays, swing and Motown on Thursdays and Latin rhythms on Fridays.

Address: 126 Drury Lane, London WC2B 5SU  
Public Transport: Covent Garden, Holborn, Temple  
Opening hours: Daily 12:30-00:00 (except Sun 16:00-18:00)  
Phone: +44 20 7836 0101  
Internet: [www.visitlondon.com/things-to-do/place/2225316-sarastro](http://www.visitlondon.com/things-to-do/place/2225316-sarastro)

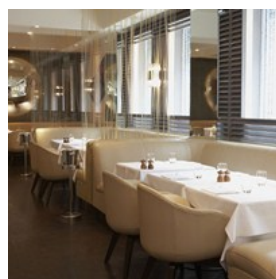
### J Sheekey



Tucked away between Leicester Square and Covent Garden, J Sheekey has been in business since the 1890s and is the place to go for sustainably sourced fish, oysters and shellfish. From Sheekey's Fish Pie to potted shrimps (plus vegetarian and meat options), there's plenty of selection for everyone.

Address: 28-34 St. Martin's Court, London WC2N 4AL  
Public Transport: Leicester Square  
Opening hours: Mon-Sat 12:00-15:00 and 17:30-00:00, Sun 12:00-15:30 and 18:00-23:00  
Phone: +44 20 7240 2565  
Internet: [www.visitlondon.com/things-to-do/place/610980-j-sheekey](http://www.visitlondon.com/things-to-do/place/610980-j-sheekey)

### Locanda Locatelli



Michelin-starred restaurant Locanda Locatelli serves top-quality, traditional Italian food created with panache by head chef Giorgio Locatelli. Stand-out dishes at the

Central London eaterie (according to the Michelin guide) include scallops, celeriac purée and saffron vinaigrette; and wild sea bass baked in salt and herb crust, escarole, sultanas and pine kernels.

Address: Locanda Locatelli, 8 Seymour Street, London W1H 7JZ  
Public Transport: Marble Arch  
Opening hours: (Lunch) Mon-Fri 12:00-15:00, Sat-Sun 12:00-15:30  
(Dinner) Mon-Thu 18:45-23:00, Fri-Sat 18:45-23:30, Sun 18:45-22:15  
(Dinner)  
Phone: +44 20 7935 9088  
Internet:  
[www.visitlondon.com/things-to-do/place/607750-locanda-locatelli](http://www.visitlondon.com/things-to-do/place/607750-locanda-locatelli)

### Mr Chow



Since it opened on Valentine's Day 1968, Mr Chow has become a London institution. The menu is authentic Beijing cuisine, featuring original recipes such as Green

Prawns, Chicken Satay and Mr Chow Noodles. The interior is worth a visit too, with its smoked mirrors, walnut furniture and elegant ambience, and every night a chef comes out to perform original hand-pulled Beijing-style noodle making.

Address: 151 Knightsbridge, London SW1X 7PA  
Public Transport: Knightsbridge  
Opening hours: Daily 12:30-15:00 and 19:00-00:00  
Phone: +44 20 7589 7347  
Internet: [www.visitlondon.com/things-to-do/place/98199-mr-chow](http://www.visitlondon.com/things-to-do/place/98199-mr-chow)

### Duke of Cambridge



The Duke of Cambridge is the first and only British pub to be certified as organic by the Soil Association. The menu at the Islington gastropub unsurprisingly features an

excellent range of delicious organic food and drinks, and changes daily according to what seasonal food is available.

Address: 30 St Peters Street, Islington, London N1 8JT  
Public Transport: Angel  
Opening hours: Mon-Sat 12:00-23:00, Sun 12:00-22:30  
Phone: +44 20 7359 3066  
Internet:  
[www.visitlondon.com/things-to-do/place/187588-duke-of-cambridge](http://www.visitlondon.com/things-to-do/place/187588-duke-of-cambridge)

### AFTERNOON TEA



Delicate finger sandwiches, tempting cakes, pots of steaming tea, scones with lashings of jam and cream... With so many delicious ingredients, it's no wonder traditional afternoon tea remains as popular in London as ever.

There are many top hotels, restaurants and cafes serving afternoon tea in London today, with many varieties available – from classic afternoon tea to low-calorie alternatives and even gentleman's afternoon teas. Here are some of the best:

### Afternoon tea at The Langham



The Langham hotel has been serving afternoon tea since 1865, and it is still drawing visitors well over a century later. Tea is served in the Palm Court, and there is a tea

sommelier on hand to help you pick from the long tea menu. There are three different tea options available, from 1865 Langham High Tea to Aspreys Diamond Jubilee Afternoon Tea.

Address: 1c Portland Place, Regent Street, London, W1B 1JA

Public Transport: Oxford Circus

Opening hours: Afternoon tea: 13:00, 15:15 and 17:30, High tea: 19:00-20:30

Phone: +44 20 7636 1000

Tickets: From £40

Internet: [www.visitlondon.com/things-to-do/place/2230223-palm-court](http://www.visitlondon.com/things-to-do/place/2230223-palm-court)

### Afternoon tea at The Berkeley



If you're a follower of fashion, you'll love The Berkeley's Prêt-à-Portea afternoon tea. Its miniature savoury skewers, taster spoons, elegant canapés and sandwiches are

all inspired by the latest collections from the likes of Oscar de la Renta, Alexander McQueen and Prada. The menu is changed every six months to adapt to the themes and colours of the new season, and tea is served in the hotel's elegant Caramel Room.

Address: Wilton Place, Knightsbridge, London SW1X 7RL

Public Transport: Knightsbridge, Hyde Park Corner

Opening hours: Served daily 13:00-17:30

Phone: +44 20 7235 6000

Tickets: From £39

Internet:

[www.visitlondon.com/things-to-do/place/6561787-caramel-room](http://www.visitlondon.com/things-to-do/place/6561787-caramel-room)

More Info: Located in The Berkeley hotel

### Afternoon tea at Brown's Hotel



Afternoon tea at Brown's Hotel is served in the cosy, timeless surroundings of the English Tea Room, complete with wood panelling, fireplaces and original art. To the sound of

music from the Baby Grand Piano, you can tuck into a selection of sweet and savoury snacks - plus tea from Brown's unique Prestige Seasonal Tea Library - and have your plate replenished at no additional charge.

Address: Albemarle Street, Mayfair, London W1S 4BP

Public Transport: Green Park, Piccadilly Circus

Opening hours: Daily 12:00-18.30

Phone: +44 20 7518 4155

Tickets: From £39.50

Internet: [www.visitlondon.com/things-to-do/place/36538365-english-tea-room-at-browns-hotel](http://www.visitlondon.com/things-to-do/place/36538365-english-tea-room-at-browns-hotel)

### Afternoon tea at Claridge's



Sample traditional afternoon tea in the glamorous Art Deco surroundings of the Foyer and Reading Room at Claridge's Hotel. At Claridge's, afternoon tea includes freshly baked

raisin and apple scones and a choice of almost 40 teas from all over the world - plus the option of adding a glass of Champagne.

Address: Brook Street, Mayfair, London W1K 4HR

Public Transport: Bond Street, Oxford Circus

Opening hours: Served daily at 15:00, 15.30, 17:00 and 17:30

Phone: +44 20 7629 8860

Tickets: From £50

Internet: [www.visitlondon.com/things-to-do/place/446037-claridges](http://www.visitlondon.com/things-to-do/place/446037-claridges)

### Afternoon tea at The Dorchester



Afternoon tea is served five times a day at The Dorchester in the timeless Promenade and elegant Spatisserie.

Choose from Vintage

Afternoon Tea on The Balcony,

The Dorchester Afternoon Tea, Champagne Afternoon Tea or the bite-size Spatisserie Afternoon Tea. Special seasonal teas are also available at different times of the year.

Address: Park Lane, London W1K 1QA

Public Transport: Hyde Park Corner, Green Park

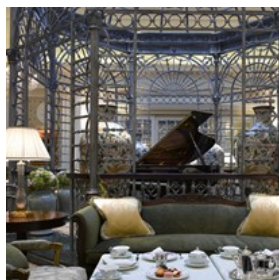
Opening hours: Afternoon tea is served at 13.15, 14.30, 15.15, 16.45 and 17.15

Phone: +44 20 7629 8888

Tickets: From £41

Internet: [www.visitlondon.com/things-to-do/place/2257434-promenade](http://www.visitlondon.com/things-to-do/place/2257434-promenade)

### Afternoon tea at The Savoy



The Savoy's afternoon tea is an elegant affair, served in the historic Thames Foyer and with the accompaniment of the hotel's resident pianist. A wide range of teas are

available, served with finger sandwiches, homemade scones with clotted cream and jam, cakes and pastries. Make time to stop in at Savoy Tea, the hotel's in-house tea shop where you'll find tea leaves, patisseries, chocolates and more.

Address: Strand, London WC2R 0EU

Public Transport: Temple, Charing Cross, Embankment

Opening hours: Daily 08:00-23:00

Phone: + 44 20 7836 4343

Tickets: From £26

Internet: [www.visitlondon.com/things-to-do/place/23703298-savoy-thames-foyer](http://www.visitlondon.com/things-to-do/place/23703298-savoy-thames-foyer)

### Afternoon Tea at Fortnum & Mason



In 2012, Fortnum & Mason's newly renamed Diamond Jubilee Tea Salon was officially opened by the Queen, the Duchess of Cornwall and the Duchess of Cambridge. Today,

afternoon tea or high tea in the Tea Salon is a suitably regal affair, with a selection of cakes and pastries from the Coronation Cake Carriage, salmon blinis, and tea and cake pairing menus.

Address: 181 Piccadilly, London W1A 1ER

Public Transport: Green Park

Opening hours: Mon-Sat 12:00-21:00, Sun 12:00-20:00

Phone: + 44 845 602 5694

Tickets: From £40

Internet: [www.visitlondon.com/things-to-do/place/2346538-afternoon-tea-at-st-jamess-restaurant-at-fortnum-and-mason](http://www.visitlondon.com/things-to-do/place/2346538-afternoon-tea-at-st-jamess-restaurant-at-fortnum-and-mason)

More Info: The Diamond Jubilee Tea Salon is located on the fourth floor of Fortnum & Mason

### Afternoon tea at The Ritz



Afternoon tea at The Ritz is a London institution. In fact, so popular is it that you have to book at least four weeks in advance. There are an incredible five afternoon tea

sittings every day to keep up with demand, which all take place in the beautiful Palm Court. Once comfortably settled, you can tuck into one of the four afternoon tea options available, choose from 17 different types of loose-leaf tea and listen to the pianist or harpist softly playing.

Address: 150 Piccadilly, London W1J 9BR

Public Transport: Green Park

Opening hours: Daily at 11:30, 13:30, 15:30, 17:30 and 19:30

Phone: +44 20 7493 8181

Tickets: From £45

Internet: [www.visitlondon.com/things-to-do/place/36538349-palm-court-afternoon-tea-at-the-ritz](http://www.visitlondon.com/things-to-do/place/36538349-palm-court-afternoon-tea-at-the-ritz)

More Info: At The Ritz Hotel

### The National Café



This vibrant venue is located close to the National Gallery and offers a glamorous but yet a relaxing atmosphere. This place serves breakfast, light meals, lunch, afternoon tea

and after-work cocktails.

Address: Trafalgar Square, London, WC2N 5DN

Phone: +44 20 7747 5942

Internet: [www.visitlondon.com/things-to-do/place/798395-national-cafe](http://www.visitlondon.com/things-to-do/place/798395-national-cafe)

More Info: National Gallery

### Afternoon tea at The Balcon



The traditional English afternoon tea gets a French twist at the The Balcon. Served in pink-and-cream hued Rose Lounge, the Balcon afternoon tea includes a tray of miniature Parisienne pastries, rose-scented strawberry jam and classic teatime finger sandwiches.

Address: 8 Pall Mall, London SW1Y 5NG

Public Transport: Charing Cross, Piccadilly Circus

Opening hours: Daily 14:30-17:30

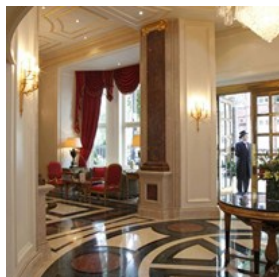
Phone: +44 20 7968 2900

Tickets: From £28

Internet: [www.visitlondon.com/things-to-do/place/29318997-afternoon-tea-at-the-balcon](http://www.visitlondon.com/things-to-do/place/29318997-afternoon-tea-at-the-balcon)

More Info: The Balcon is located inside Sofitel London St James hotel

### Afternoon tea at The Bentley



As well as the traditional afternoon tea, The Bentley offers an indulgent chocolate and Champagne afternoon tea selection, as well as other classic British snacks such as toasted crumpets and muffins. Tea is served in the opulent lobby or in the light and summery Peridot restaurant.

Address: 27-33 Harrington Gardens, London SW7 4JX

Public Transport: Gloucester Road

Opening hours: Daily 15:00-18:00

Phone: +44 20 7244 5555

Tickets: From £25

Internet: [www.visitlondon.com/things-to-do/place/30990246-afternoon-tea-at-the-bentley](http://www.visitlondon.com/things-to-do/place/30990246-afternoon-tea-at-the-bentley)

### Afternoon tea at The Cadogan



Afternoon Tea has been served at The Cadogan since 1887. The country-house style Drawing Room is a fitting location for this very British tradition, with its oak wood

panelling, original art, stained-glass windows and comfy tweed armchairs. Choose from The Cadogan Afternoon Tea or The Cadogan Cream Afternoon Tea.

Address: 75 Sloane Street, Knightsbridge, London SW1X 9SG

Public Transport: Knightsbridge, Sloane Square

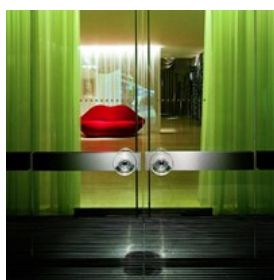
Opening hours: Daily

Phone: +44 800 023 5445

Tickets: From £17

Internet: [www.visitlondon.com/things-to-do/place/29574862-afternoon-tea-at-the-cadogan](http://www.visitlondon.com/things-to-do/place/29574862-afternoon-tea-at-the-cadogan)

### Afternoon tea at The Sanderson



Design-led London hotel The Sanderson has dreamed up a characteristically quirky afternoon tea: the Mad Hatter's Tea. Created in collaboration with design

collective Luna & Curious, this Alice In Wonderland-inspired tea is served amid all manner of strange props, from menus hidden inside vintage books to napkins wrapped with riddles. The food is equally inventive with strawberries and cream homemade marshmallow mushrooms, a Tick Tock traditional Victoria sponge clock and a trolley of jellies in traditional Victorian jelly moulds.

Address: 50 Berners Street, London W1T 3NG

Public Transport: Oxford Circus, Goodge Street, Tottenham Court Road

Opening hours: Daily 12:30-17:30pm

Phone: +44 207 300 5588

Tickets: From £35

Internet: [www.visitlondon.com/things-to-do/place/39130675-mad-hatters-afternoon-tea-at-sanderson](http://www.visitlondon.com/things-to-do/place/39130675-mad-hatters-afternoon-tea-at-sanderson)

### Afternoon tea at Lancaster London



Lancaster London's award-winning restaurant Nipa offers the first Thai Afternoon Tea in London. As you look over the beautiful vista of Hyde Park below, you can

enjoy a fusion of cuisines, including Thai-style sandwiches, savouries, scones and pastries - with the option of adding a glass of Champagne or pink Champagne.

Address: Lancaster Terrace, London W2 2TY

Public Transport: Lancaster Gate

Opening hours: Fri-Sun 14:00-16:00

Phone: +44 207 551 6000

Tickets: From £22

Internet: [www.visitlondon.com/things-to-do/place/38359062-afternoon-tea-at-lancaster-london](http://www.visitlondon.com/things-to-do/place/38359062-afternoon-tea-at-lancaster-london)

### Afternoon tea at the Reform Social and Grill



The Vintage Afternoon Tea at the Reform Social & Grill celebrates the best of British produce, with Scottish smoked salmon, Cumbrian goats curd and ham from

restaurant's local butcher. There are lots of retro favourites too, including Battenburg cakes and individual Black Forest Gateaux with kirsch cherries. Plus a special Gentleman's Afternoon Tea, which includes a hearty burger, pork pie and steak & snails sandwich, topped off with a whiskey cocktail.

Address: The Mandeville, Mandeville Place, London W1U 2BE

Public Transport: Bond Street

Opening hours: Mon-Fri 15:00-17:30, Sat-Sun 12:00-17:30

Phone: +44 207 224 1624

Tickets: £26.50

Internet: [www.visitlondon.com/things-to-do/place/2145092-reform-social-and-grill-restaurant](http://www.visitlondon.com/things-to-do/place/2145092-reform-social-and-grill-restaurant)

More Info: Reform Social & Grill is located inside The Mandeville hotel

### BARS & NIGHTLIFE



London's nightlife is one of the most vibrant and versatile in the world, with everything from mega clubs to live music, trendy bars to traditional pubs.

Central London hotspots like Soho and Leicester Square attract visitors most nights of the week, but if it's cool and trendy you're after try out-of-town neighbourhoods too, like Hoxton and Shoreditch in East London or Brixton and Clapham in South London.

Here's just a taster of what London has to offer for a fantastic night out, including quirky pubs and bars, world-renowned clubs, stunning night-time views and much, much more...

ARE YOU LOOKING FOR UP-TO-DATE  
CONTENT FOR YOUR TRAVEL SITE?



[arrivalguides.biz/distribution](http://arrivalguides.biz/distribution)

[ola.zetterlof@arrivalguides.com](mailto:ola.zetterlof@arrivalguides.com)



## Ministry of Sound



Converted from an old bus station in the 90s, the Ministry of Sound is a legend on London's club scene - and an international brand too.

Located close to Elephant &

Castle, south of Waterloo, the club boasts five rooms, four bars, a VIP lounge, a courtyard area and what's said to be the world's best sound system.

Address: 103 Gaunt Street, Elephant & Castle, London SE1 6DP

Public Transport: Elephant & Castle

Opening hours: Fri 22:30-06:00, Sat 23:00-07:00

Phone: +44 207 740 8682

Internet: [www.visitlondon.com/things-to-do/place/102181-ministry-of-sound-london](http://www.visitlondon.com/things-to-do/place/102181-ministry-of-sound-london)

## Fabric



Housed in a former meat market in the City of London, Fabric is so popular it was named fourth in DJ Magazine's Top 100 Clubs (in the world) list for 2013. Head

down on Fridays for drum & bass, dubstep, techno, electro and house, or on Saturdays and Sundays if you're into techno, house, electronica and tech-house.

Photo: RAMJAM1 (c) Sarah Ginn 2013

Address: 77a Charterhouse Street, London EC1M 6HJ

Public Transport: Farringdon, Barbican

Opening hours: Fri 22.00, Sat 23.00, Sun 23:00

Phone: +44 207 336 8898

Internet:

[www.visitlondon.com/things-to-do/place/177221-fabric-nightclub](http://www.visitlondon.com/things-to-do/place/177221-fabric-nightclub)

## Selfridges



Yes, that's right: Selfridge's department store now has an oasis in the middle of all the shopping hoopla. A place with soothing bubbles for the soul. Is it a day spa? No. It's the

Moët & Chandon Champagne Bar.

Address: 400 Oxford Street, W1

Public Transport: Marble Arch

Phone: +44 113 369 8040

Internet: [www.searcys.co.uk/venues/balcony-brasserie-selfridges/moet-chandon-rose-champagne-bar](http://www.searcys.co.uk/venues/balcony-brasserie-selfridges/moet-chandon-rose-champagne-bar)

## The Argyll Arms



Known for its real ales, traditional pub grub and beautiful Victorian décor, The Argyll Arms is a slice of old London in the bustling shopping district of Oxford

Street. Completed in 1742, the Grade II listed pub is named after the second Duke of Argyll and there is a rumour that a secret tunnel once connected the pub to the duke's mansion.

Address: 18 Argyll Street, London W1F 7TP

Public Transport: Oxford Circus

Opening hours: Mon-Thu 10:00-23:30, Fri-Sat 10:00-00:00, Sun 10:00-23:00

Phone: +44 20 7734 6117

Internet:

[www.visitlondon.com/things-to-do/place/38289854-argyll-arms](http://www.visitlondon.com/things-to-do/place/38289854-argyll-arms)

## Icebar London



Carved out of crystal-clear ice from the Torne River in Sweden and maintained at a constant minus-five degrees year-round, Icebar London is literally the coolest bar in

town. Everything in the bar is made from ice, including the

walls, tables, chairs and even the glasses that the cocktails are served in. And every autumn the bar is re-sculptured into a new, themed design.

Address: 31-33 Heddon Street, London, W1B 4BN  
Public Transport: Oxford Circus, Piccadilly Circus  
Opening hours: Mon-Thu 15:30-22:15, Fri 14:00-23:45, Sat 11:45-00:30, Sat 14:00-22:15  
Phone: +44 20 7478 8910  
Internet:  
[www.visitlondon.com/things-to-do/place/288624-icebar-london](http://www.visitlondon.com/things-to-do/place/288624-icebar-london)

### Gordon's Wine Bar

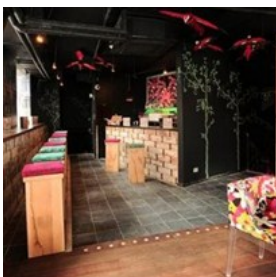


Thought to be London's oldest wine bar (it was established in 1890), Gordon's is a wonderfully atmospheric venue that feels like something from another era.

Lit by candlelight, this cellar-bar serves a wide range of wines, sherries and ports from the barrel, and hearty meals. Always busy, you're advised to arrive around 4pm if you want to bag a table.

Address: 47 Villiers Street, London WC2N 6NE  
Public Transport: Charing Cross, Embankment  
Opening hours: Mon-Sat 11:00-23:00, Sun 12:00-22:00  
Phone: +44 20 7930 1408  
Internet:  
[www.visitlondon.com/things-to-do/place/606995-gordons-wine-bar](http://www.visitlondon.com/things-to-do/place/606995-gordons-wine-bar)

### Piccadilly Institute



Ideally located in the heart of Piccadilly, the Piccadilly Institute has something for everyone, with six different themed rooms incorporating all sorts of weird and

wonderful designs. Happy hour is 5-9pm every night, with everything from 80s classic to R&B on the decks.

Address: The London Pavillion, 1 Piccadilly Circus, London W1V 9LA  
Public Transport: Piccadilly Circus  
Opening hours: Mon-Sat 17:00-03:00, Sun 17:00-00:30

Phone: +44 20 7287 8008  
Internet:  
[www.visitlondon.com/things-to-do/place/23885961-piccadilly-institute](http://www.visitlondon.com/things-to-do/place/23885961-piccadilly-institute)

### DSTRKT London

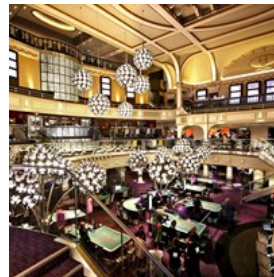


Thanks to its futuristic design, live stage and great central location, DSTRKT London has become a favourite among the A-list. Famous guests to have visited the Piccadilly hotspot's

VIP lounge include Jay Z, Rihanna, Kanye West, Gwyneth Paltrow, Kim Kardashian and Nicole Scherzinger.

Address: 9 Rupert Street, W1D 6DG London  
Public Transport: Piccadilly Circus, Leicester Square  
Opening hours: Mon-Sat 22:00-03:00  
Phone: +44 207 317 9120  
Internet:  
[www.visitlondon.com/things-to-do/place/24156985-dstrkt-london](http://www.visitlondon.com/things-to-do/place/24156985-dstrkt-london)

### The Hippodrome Casino



Just like Leicester Square, where it is located, the five-floor Hippodrome Casino is glitzy, vibrant and full of distractions. As well as the gaming areas there are live

shows, six bars, a restaurant, two lounges and an outdoor smoking and cigar bar. The heart of it all is the Heliot bar on the first floor balcony, serving new twists on classic cocktails from the Hippodrome's glittering past.

Address: Leicester Square, London WC2H 7JH  
Public Transport: Leicester Square  
Opening hours: 24 hours a day, seven days a week  
Phone: +44 207 769 8888  
Internet:  
[www.visitlondon.com/things-to-do/place/26065530-hippodrome-casino](http://www.visitlondon.com/things-to-do/place/26065530-hippodrome-casino)



### The Atlas Pub



The Atlas Pub is a warm and relaxing venue, where you'll find stylish wood panelling, fresh flowers and a brick fireplace. It also has a fine selection of wines and ales, a menu full of delicious and diverse dishes, and is the location of The London Wine Academy's popular wine workshops.

Address: 16 Seagrave Road, Fulham, London SW6 1RX

Public Transport: West Brompton

Opening hours: Mon-Sat 12:00-23:00, Sun 12:00-22:30pm (separate kitchen opening hours apply)

Phone: +44 20 7385 9129

Internet: [www.visitlondon.com/things-to-do/place/607060-atlas-pub](http://www.visitlondon.com/things-to-do/place/607060-atlas-pub)

### The Roxy



Below the busy streets of London's West End lies informal basement bar The Roxy. Popular with everyone from students to the after-work crowd, The Roxy

has six weekly club nights pumping out popular, electronic and alternative music. Happy hour kicks off at 5pm and ends at 8.30pm.

Address: 3-5 Rathbone Place Marylebone, London W1T 1HJ

Public Transport: Tottenham Court Road

Opening hours: Mon-Thu 17:00-03:00, Fri 17:00-03:30, Sat 21:30-03:30

Phone: +44 20 7255 1098

Internet: [www.visitlondon.com/things-to-do/place/58911-roxy](http://www.visitlondon.com/things-to-do/place/58911-roxy)

### The Prince Alfred



Opened in 1863, The Prince Alfred has retained much of its period features, including the original Victorian snugs - each with its own door onto the street and separated from each other by a wooden partition with a small access door.

The PA as it is known locally also serves food in the adjoining Formosa Dining room and is located close to the picturesque waterside of Little Venice.

Address: The Prince Alfred, 5a Formosa Street, London W9 1EE

Public Transport: Warwick Avenue

Opening hours: Mon-Thu 12:00-23:00, Fri-Sat 12:00-00:00, Sun 12:00-22:30

Phone: +44 20 7286 3287

Internet: [www.visitlondon.com/things-to-do/place/607207-prince-alfred](http://www.visitlondon.com/things-to-do/place/607207-prince-alfred)

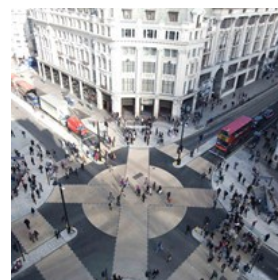
## SHOPPING



Shopping in London is one of the most popular pastimes for visitors and locals alike. And little wonder given the huge range of shopping destinations across the capital, from high-end luxury boutiques and huge department stores to lively markets and vintage pop-ups.

The key is to find the right shopping area for you, be it the bright lights and big brands of the West End, the quirky crafts and outrageous fashions of Camden or the sharp suits of Savile Row. Here are just a few of London's top shopping destinations well worth a visit...

### Oxford Street



Oxford Street is the ultimate London shopping destination, packed with high-street fashion, international brands, technology, homewear and much, much more. No wonder its streets are always full of bag-laden shoppers! Favourite destinations include a huge branch of Topshop, plus iconic

department stores such as Selfridges, John Lewis, House of Fraser and Marks & Spencer.

Address: Oxford Street, London

Public Transport: Oxford Circus, Tottenham Court Road, Bond Street, Marble Arch

Opening hours: Check with individual venues

Phone: +44 20 7462 0689

Internet:

[www.visitlondon.com/things-to-do/place/5042973-oxford-street](http://www.visitlondon.com/things-to-do/place/5042973-oxford-street)

## Selfridges



Selfridges' flagship London store is one of the world's finest department stores, with six floors of fabulous fashion, pop-up concessions, electrical gadgets, stylish homeware

and tasty food. But it's far more than just a shopping destination, it's a social hub - with events, bars, restaurants, cafes, art exhibitions and the odd rooftop party.

Address: 400 Oxford Street, London W1A 1AB

Public Transport: Bond Street

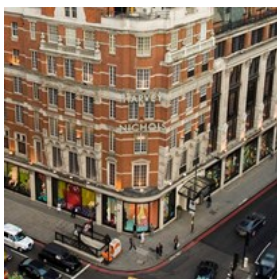
Opening hours: Mon-Sat 09:30-21:00, Sun 11:30-18:00

Phone: +44 113 369 8040

Internet:

[www.visitlondon.com/things-to-do/place/401307-selfridges-and-co](http://www.visitlondon.com/things-to-do/place/401307-selfridges-and-co)

## Harvey Nichols



Harvey Nichols, or Harvey Nicks as it's known locally, is a favourite among London's fashionistas. Its flagship Knightsbridge store opened in the 1880s and today boasts a

massive eight floors of fashion, beauty and lifestyle collections. The fifth floor is given over to the stylish Fifth Floor Restaurant, Café and Bar - plus a food market and wine shop.

Address: 109-125 Knightsbridge, London SW1X 7RJ

Public Transport: Knightsbridge, Hyde Park Corner

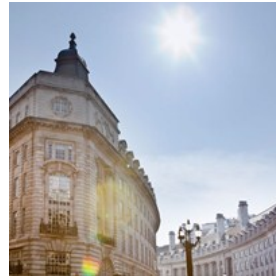
Opening hours: Mon-Sat 10:00-20:00, Sun 11:30-18:00

Phone: +44 20 7235 5000

Internet:

[www.visitlondon.com/things-to-do/place/224713-harvey-nichols](http://www.visitlondon.com/things-to-do/place/224713-harvey-nichols)

## Regent Street



With its beautiful curved facades, listed architecture and elegant hotels, Regent Street is a cultural destination as well as a shopping hotspot. Top brands such as Liberty,

Apple and Hamleys congregate here, alongside what is the largest Burberry store in the world.

Address: Regent Street, London

Public Transport: Oxford Circus, Piccadilly Circus

Opening hours: Check with individual venues

Internet: [www.visitlondon.com/things-to-do/place/64061-regent-street](http://www.visitlondon.com/things-to-do/place/64061-regent-street)

## Liberty



Instantly recognisable by its iconic mock-Tudor frontage, Liberty is a lavish design emporium located just off Regent Street. It first opened its doors in 1875, and was

later crowned by Oscar Wilde "the chosen resort of the artistic shopper." Today it's best known for its top-quality fashion, jewellery, beauty, furniture, toys, oriental rugs and much more.

Address: Regent Street, London W1B 5AH

Public Transport: Oxford Circus

Opening hours: Mon-Sat 10:00-20:00, Sun 12:00-18:00

Phone: +44 20 7734 1234

Internet: [www.visitlondon.com/things-to-do/place/120227-liberty-london](http://www.visitlondon.com/things-to-do/place/120227-liberty-london)

More Info: The main entrance is located on Great Marlborough Street

### Covent Garden and Seven Dials



As well as its street entertainment, Covent Garden is famous for its covered markets: Apple Market, Jubilee Market and East Colonnade Market, which sell everything from British arts and crafts to jewellery and antiques. The area has many permanent stores too, from the ever-popular Disney Store to travel book shop Stanfords. Close by are two other unique London shopping destinations: Neal Street and Covent Garden's 'village' Seven Dials, a collection of streets packed with fashion boutiques, vintage shops, jewellers and furniture design stores.

Public Transport: Covent Garden

Internet: [www.visitlondon.com/discover-london/london-areas/central/covent-garden-shopping](http://www.visitlondon.com/discover-london/london-areas/central/covent-garden-shopping)

### Knightsbridge



Knightsbridge and the surrounding areas of Chelsea and South Kensington are known for their high-end fashion and prestigious brands. On Sloane Street, you'll find Prada, Gucci, Giorgio Armani, Dolce et Gabbana, Fendi and many more top labels. The road intersects to the north with Brompton Road, home to the likes of Harrods and Harvey Nichols, and to the south with King's Road, where punk and other counterculture movements flourished in the 1960s. Today it's where you'll find Vivienne Westwood's London shop and department store Peter Jones.

Public Transport: Knightsbridge, Sloane Square, South Kensington

Internet: [www.visitlondon.com/things-to-do/place/27152354-knightsbridge-estate](http://www.visitlondon.com/things-to-do/place/27152354-knightsbridge-estate)

### Harrods



Famous around the world, Harrods is a gold-and-green beacon on London's shopping scene. Inside the stunning store you'll find everything from homewares and kitchen essentials to books and beauty products. But most people make a beeline for the Harrods-branded gifts, fashion aisles and food hall, an ornate treasure trove of foodie delicacies and sweet treats.

Address: 87-135 Brompton Road, Knightsbridge SW1X 7XL

Public Transport: Knightsbridge

Opening hours: Mon-Sat 10:00-20:00, Sun 11:30-18:00

Phone: +44 20 7730 1234

Internet: [www.visitlondon.com/things-to-do/place/282605-harrods](http://www.visitlondon.com/things-to-do/place/282605-harrods)

### Savile Row



Mayfair street Savile Row has been synonymous with traditional bespoke tailoring since 1803 and remains a key player on the London fashion scene thanks to cutting-edge designers such as Richard James and Ozwald Boateng. For shirts, ties, hats and other accessories, head for nearby Jermyn Street.

Address: Mayfair, London W1S 3PG

Internet: [www.visitlondon.com/things-to-do/place/29718519-savile-row](http://www.visitlondon.com/things-to-do/place/29718519-savile-row)

### Greenwich Market



Packed with unique arts and crafts, Greenwich Market is the place to go for one-off, unique gifts and souvenirs - be it handmade jewellery, natural beauty products, children's toys or antiques (every day has a different specialism). There are also permanent shops selling art, clothing and accessories - plus a good range of food stalls serving up

delicious cuisine from around the world.

Address: Greenwich High Road, London, SE10 9HZ  
Public Transport: Cutty Sark, Greenwich  
Opening hours: Tue-Sun 10:00-17:30 (Late closing on Fridays until 19:30)  
Phone: +44 20 8293 3110  
Tickets: Free  
Internet:  
[www.visitlondon.com/things-to-do/place/159294-greenwich-market](http://www.visitlondon.com/things-to-do/place/159294-greenwich-market)  
More Info: The market can also be accessed from College Approach

## Mayfair



Mayfair is home to some of the world's most prestigious brands and luxury hotels, and is London's most exclusive shopping destination. Along Mount Street you'll find many

luxury fashion and beauty brands, art and antiques dealers and top restaurants. Other Mayfair retail residents include Marc Jacobs, Christian Louboutin, Jenny Packham, Balenciaga, Purdey and William & Son.

Address: Mayfair  
Public Transport: Bond Street, Marble Arch, Green Park  
Internet: [www.visitlondon.com/things-to-do/place/25327061-mayfair](http://www.visitlondon.com/things-to-do/place/25327061-mayfair)

## Westfield London



Westfield London is a super-sized shopping and leisure destination in West London's Shepherd's Bush. Inside this stunningly designed mall you'll find more than 265

luxury and high-street shops, from Debenhams to Dior (located inside luxury brand area The Village). There are also plenty of restaurants and bars to refuel at along the Southern Terrace, plus a 14-screen cinema, gym, spa, library and a packed programme of special events in the central Atrium.

Address: Ariel Way, London W12 7GF  
Public Transport: Shepherd's Bush

Opening hours: Mon-Sat 10:00-22:00, Sun 12:00-18:00 (Individual store times may vary)

Phone: +44 20 3371 2300

Internet:

[www.visitlondon.com/things-to-do/place/3903607-westfield-london](http://www.visitlondon.com/things-to-do/place/3903607-westfield-london)

## Westfield Stratford City



The sister mall to the pioneering Westfield London, Westfield Stratford City has revitalised East London with its great brands, top restaurants and entertainment

venues. As well as 250 shops and 70 dining spots, there's a cinema, All Star Lanes bowling experience and 65,000ft casino. While you're there, look out for great views over the stunning Queen Elizabeth Olympic Park nearby.

Address: Montfichet Road, Queen Elizabeth Olympic Park, London E20 1EJ

Public Transport: Stratford, Stratford International

Opening hours: Mon-Fri 10:00-21:00, Sat 09:00-21:00, Sun 12:00-18:00

Phone: +44 208 221 7300

Internet: [www.visitlondon.com/things-to-do/place/16924475-westfield-stratford-city](http://www.visitlondon.com/things-to-do/place/16924475-westfield-stratford-city)

## Camden Lock Market



Located next to the picturesque canal, Camden Lock Market is a must if you're into quirky, alternative and unique gifts, fashion and crafts. Comprising a mix of

shops and stalls, the buzzing market has been attracting crowds of visitors since 1972. While you're in the area, make sure you visit the nearby Stables Market and Camden Market (formerly Buck Street Market).

Address: 54-56 Camden Lock Place, Chalk Farm Road, London, NW1 8AF

Public Transport: Camden Town, Camden Road, Chalk Farm

Opening hours: Daily 10:00-18:00

Phone: +44 207 485 7963

Internet: [www.visitlondon.com/things-to-do/place/25698506-camden-lo](http://www.visitlondon.com/things-to-do/place/25698506-camden-lo)

ck-market

## ACCOMMODATION

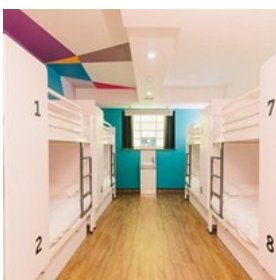


London has a wide range of accommodation to suit every need and budget, from cheap B&Bs and hostels to five-star hotels.

As well as national and international hotel chains and hostels, London has many unique hotels, renowned for their quirky interiors, remarkable histories, famous guests and stunning designs.

Begin the search for your perfect London hotel with our suggestions below, just a sample of the huge amount of accommodation options available in London.

### Generator



The Generator Hostel offers young budget travellers a unique guest experience in European major cities - such as London. Female dorms are also available. The hostel

facilities include the famous Generator bar, which is open daily, a restaurant for breakfast and dinner, internet café with free Wi-Fi, chill out area, luggage room, laundry service, awesome parties and much more.

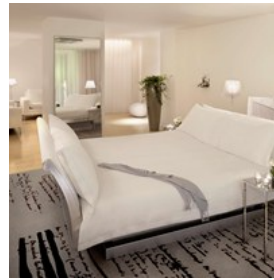
Address: 37 Tavistock Place, WC1

Public Transport: Russel Square

Phone: +44 20 7388 7666

Internet: [www.visitlondon.com/where-to-stay/place/286845-generator-hostel-london](http://www.visitlondon.com/where-to-stay/place/286845-generator-hostel-london)

### Sanderson



Perhaps the most outlandish yet beautiful of London's design hotels, Sanderson is the result of collaboration between hotel mogul Ian Schrager and the French design superstar Philippe Starck. The bedrooms are minimalist, almost dreamy, and the spa with its shimmering curtains is the best you will find in London.

Address: 50 Berners Street, W1

Public Transport: Tottenham Court Road, Oxford Street

Phone: +44 20 7300 1400

Internet: [www.visitlondon.com/where-to-stay/place/54206-sanderson](http://www.visitlondon.com/where-to-stay/place/54206-sanderson)

### Athanaeum Hotel and Apartments



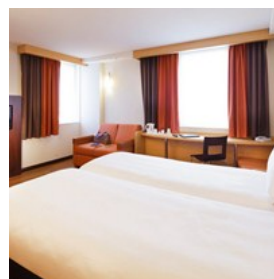
This wonderful family-owned five star hotel is located in Mayfair and overlooks Green Park and Buckingham Palace. Hotel facilities you will find at this beautiful designed hotel are; a restaurant, whisky bar, spa and meeting rooms.

Address: 116 Piccadilly, Mayfair, London W1J 7BJ

Phone: +44 20 7499 3464

Internet: [www.visitlondon.com/where-to-stay/place/244819-athanaeum-hotel-and-apartments](http://www.visitlondon.com/where-to-stay/place/244819-athanaeum-hotel-and-apartments)

### Ibis London Blackfriars



This is a great hotel and good value for money, located in the central of London. The hotel offers modern rooms and comfortable beds. If you are feeling hungry or thirsty the hotel provides a restaurant and bar. There is also free wifi.

Address: 49 Blackfriars Road, London SE1 8NZ

Phone: +44 207 633 2720

Internet: [www.visitlondon.com/where-to-stay/place/26635208-ibis-lond-on-blackfriars](http://www.visitlondon.com/where-to-stay/place/26635208-ibis-lond-on-blackfriars)

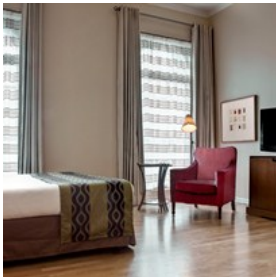
### Travelodge London Kings Cross Royal Scot Hotel



Travelodge is a fast growing budget hotel chain with over 22 hotels in London city centre. One of them you will find in Kings Cross Road close to restaurants, bars and shops. The hotel offers comfortable and spacious rooms with basic amenities.

Address: 100 Kings Cross Road, London WC1X 9DT  
Phone: +44 871 984 6272  
Internet: [www.visitlondon.com/where-to-stay/place/440747-travelodge-london-kings-cross-royal-scot-hotel](http://www.visitlondon.com/where-to-stay/place/440747-travelodge-london-kings-cross-royal-scot-hotel)

### Sherlock Holmes Hotel



You would probably expect this hotel to be a throwback to Victorian times. In fact, it's quite the opposite. This is a chic boutique hotel with a great lobby and bar and the rooms are decorated in brown and beige, with pinstripe sheets and beds with leather headboards.

Address: 108 Baker Street, London W1U 6LJ  
Public Transport: Baker Street, Marble Arch, Bond Street  
Phone: +44 20 7486 6161  
Internet: [www.visitlondon.com/where-to-stay/place/48928-park-plaza-sherlock-holmes-hotel](http://www.visitlondon.com/where-to-stay/place/48928-park-plaza-sherlock-holmes-hotel)

### Mayflower Hotel



Following a complete renovation, the Mayflower Hotel has taken a top spot among London's budget hotels. The décor is minimalistic, with hints of the Far East including wooden floors, teak furniture and ceiling fans.

Address: 26-28 Trebovir Road, SW5

Public Transport: Earl's Court  
Phone: +44 20 7370 0991  
Internet: [www.visitlondon.com/where-to-stay/place/286509-mayflower](http://www.visitlondon.com/where-to-stay/place/286509-mayflower)

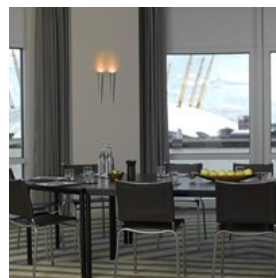
### Marble Arch Inn



A friendly bed and breakfast hotel located in the centre of London only three minutes' walk to Hyde Park, Oxford street and Regent street. Close to all major tourist attractions in London like Buckingham Palace and Houses of Parliament.

Address: 49/50 Upper Berkeley Street Marble Arch, London W1H 5QR  
Phone: +44 20 7723 7888  
Internet: [www.visitlondon.com/where-to-stay/place/110045-marble-arch-inn](http://www.visitlondon.com/where-to-stay/place/110045-marble-arch-inn)

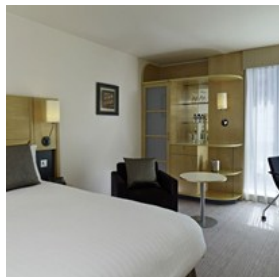
### Radisson Blu Edwardian New Providence Wharf



Located just minutes from Canary Wharf and City Airport, Radisson Blu Edwardian New Providence Wharf is ideal for both business stays and a relaxing, riverside getaway. Top features at the four-star luxury hotel include the East River Spa, a waterside dining terrace and a well-equipped business centre. The New Providence Wharf hotel is one of 12 Radisson Blu Edwardian hotels located across London.

Address: Radisson Blu Edwardian New Providence Wharf, 5 Fairmont Avenue, Canary Wharf, London E14 9PJ  
Public Transport: Blackwall, East India  
Phone: + 44 800 37 44 11  
Tickets: From £165  
Internet: [www.visitlondon.com/where-to-stay/place/755880-radisson-bl-u-edwardian-new-providence-wharf](http://www.visitlondon.com/where-to-stay/place/755880-radisson-bl-u-edwardian-new-providence-wharf)

### DoubleTree by Hilton Hotel London - Westminster



Smart, central hotel DoubleTree by Hilton Hotel London – Westminster is located in the heart of Westminster, within walking distance of the Houses of

Parliament and other top riverside attractions. Facilities include a fitness room, Millbank Lounge bar and City Café restaurant, serving locally-sourced, seasonal dishes. The DoubleTree hotel is one of a range of 40 Hilton-branded hotels in London.

Address: DoubleTree by Hilton Hotel London - Westminster, 30 John Islip Street, London SW1P 4DD

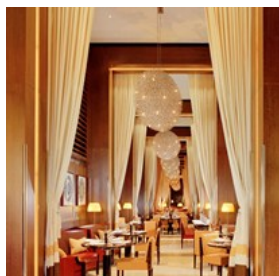
Public Transport: Westminster, Pimlico

Phone: +44 207 630 1000

Tickets: From £191

Internet: [www.visitlondon.com/where-to-stay/place/209580-doubletree-by-hilton-london-westminster](http://www.visitlondon.com/where-to-stay/place/209580-doubletree-by-hilton-london-westminster)

### The Dorchester



Iconic London hotel The Dorchester mixes 1930s glamour with contemporary style - and stunning views overlooking Hyde Park. The dining options are excellent,

including as they do Michelin-starred Alain Ducasse, China Tang, The Grill, The Promenade and the Spatisserie, where afternoon tea is served. No wonder its guest list has included the likes of Elizabeth Taylor, Arnold Schwarzenegger and Woody Allen.

Address: The Dorchester, Park Lane, Mayfair, London, W1K 1QA

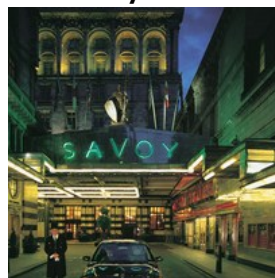
Public Transport: Hyde Park Corner, Green Park, Marble Arch

Phone: +44 20 7319 7102

Tickets: From £464.13

Internet: [www.visitlondon.com/where-to-stay/place/478420-dorchester](http://www.visitlondon.com/where-to-stay/place/478420-dorchester)

### The Savoy



The Savoy first opened its doors in 1889 and has been welcoming a steady stream of Hollywood stars, political heavyweights and glamorous guests ever since. As well as

the famous Savoy Grill, you can dine at Kaspar's Seafood Bar and Grill and Thames Foyer, or enjoy a cocktail at one of the hotel's two bars. And it's just a short walk to Covent Garden, Trafalgar Square and, of course, the Savoy Theatre.

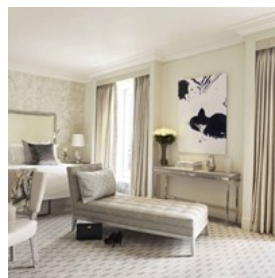
Address: The Savoy, Strand, London WC2R 0EU

Public Transport: Charing Cross, Temple, Covent Garden

Phone: + 44 20 7836 4343

Internet: [www.visitlondon.com/where-to-stay/place/440811-savoy-a-fair-mont-hotel](http://www.visitlondon.com/where-to-stay/place/440811-savoy-a-fair-mont-hotel)

### The Berkeley



The Berkeley is located in the heart of London's Knightsbridge, close to Sloane Street and Hyde Park. The hotel began life as a coffee house around 300 years ago,

and is now a five-star, award-winning hotel known for its rooftop pool, Bamford Haybarn spa and catwalk-inspired Prêt-à-Portea afternoon tea.

Address: The Berkeley, Wilton Place, Knightsbridge, London SW1X 7RL

Public Transport: Knightsbridge, Hyde Park Corner

Phone: +44 20 7235 6000

Tickets: From £292.58

Internet: [www.visitlondon.com/where-to-stay/place/285822-berkeley](http://www.visitlondon.com/where-to-stay/place/285822-berkeley)

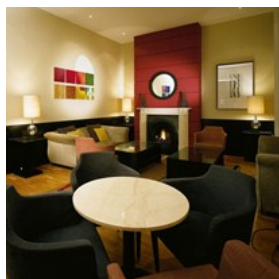
### Town Hall Hotel



The Town Hall Hotel combines luxury with cutting-edge design in London's trendy East End. In keeping with its surroundings, Town Hall Hotel exudes creative chic, from the vintage furniture in each room to the Town Hall Tea Lady - a kind of cocktail-making room service. Other features include the Michelin-starred Viajante restaurante, more informal Corner Room restaurant and in-house bar.

Address: Town Hall Hotel, Patriot Square, Bethnal Green, London E2 9NF  
Public Transport: Bethnal Green, Cambridge Heath  
Phone: +44 20 7871 0460  
Tickets: From £208.80  
Internet:  
[www.visitlondon.com/where-to-stay/place/7443602-town-hall-hotel](http://www.visitlondon.com/where-to-stay/place/7443602-town-hall-hotel)

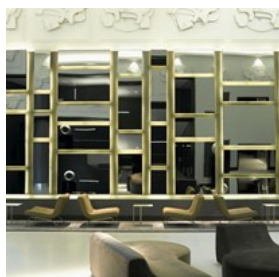
### K + K Hotel George



Located close to Earls Court exhibition centre and the fashionable shopping area of Knightsbridge, K + K Hotel George is a stylish, good-value stay in West London. As well as 154 guest rooms, the Victorian-era building houses a bistro lounge, wellness area and peaceful private garden.

Address: K+K Hotel George, 1-15 Templeton Place, London SW5 9NB  
Public Transport: Earl's Court  
Phone: +44 20 7598 8700  
Tickets: From £110  
Internet:  
[www.visitlondon.com/where-to-stay/place/283006-k-k-hotel-george](http://www.visitlondon.com/where-to-stay/place/283006-k-k-hotel-george)

### ANdAZ Liverpool Street



Part of the Hyatt's hotel brand, Andaz Liverpool Street London is one of London's original railway hotels. Housed in a beautiful redbrick Victorian building dating back to 1884,

five-star Andaz boasts an amazing seven restaurants and bars. It's also just a short walk to trendy Spitalfields, buzzing Brick Lane and The City's financial hub.

Address: Andaz Liverpool Street London, 40 Liverpool Street, London EC2M 7QN  
Public Transport: Liverpool Street  
Phone: +44 207 961 1234  
Tickets: From £126  
Internet: [www.visitlondon.com/where-to-stay/place/283742-andaz-liverpool-street](http://www.visitlondon.com/where-to-stay/place/283742-andaz-liverpool-street)

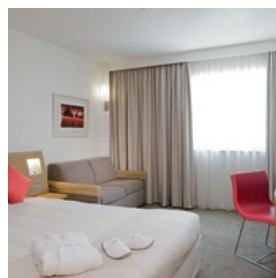
### H10 London Waterloo



H10 London Waterloo is a modern hotel situated close to Waterloo and London's South Bank - home to the London Eye, National Theatre and Southbank Centre. There are 177 bright rooms within the hotel, plus the Three O Two restaurant, Circus Lounge and Despacio Beauty Centre.

Address: H10 London Waterloo, 284-302 Waterloo Road, London SE1 8RQ  
Public Transport: Waterloo, Lambeth North, Southwark  
Phone: +44 207 928 4062  
Tickets: From £99  
Internet: [www.visitlondon.com/where-to-stay/place/6909267-h10-london-waterloo](http://www.visitlondon.com/where-to-stay/place/6909267-h10-london-waterloo)

### Novotel London Greenwich



Tucked away in the heart of historic Greenwich, the 4-star Novotel London Greenwich is an excellent spot from which to explore this World Heritage Site - with easy access to Central London too. Local attractions include the National Maritime Museum, Royal Observatory and the O2 Arena. And with children under 16 allowed to stay for free in their parents' or grandparents' room, it's ideal for families.

Address: Novotel London Greenwich, 173-185 Greenwich High Road, London SE10 8JA



Public Transport: Greenwich  
Phone: +44 20 7660 0682  
Internet: [www.visitlondon.com/where-to-stay/place/283577-novotel-london-greenwich](http://www.visitlondon.com/where-to-stay/place/283577-novotel-london-greenwich)

### Premier Inn London Blackfriars (Fleet Street)



Premier Inn London Blackfriars is ranked an incredible 37 out of all London's hotels on TripAdvisor. Little wonder given its affordable rates and

excellent location close to St Paul's Cathedral, Tate Modern and The City. One of 30 Premier Inn hotels across London.

Address: Premier Inn London Blackfriars (Fleet Street), 1-2 Dorset Rise, London EC4Y 8EN  
Public Transport: London Blackfriars, City Thameslink  
Phone: +44 871 527 9362  
Tickets: From £79  
Internet: [www.visitlondon.com/where-to-stay/place/29593406-premier-inn-london-blackfriars-fleet-street](http://www.visitlondon.com/where-to-stay/place/29593406-premier-inn-london-blackfriars-fleet-street)

### Church Street Hotel



Church Street Hotel brings a taste of Latin America to South London. From the Havana-inspired lounge and colourful rooms to the sister Spanish tapas restaurant

Angels & Gypsies, the atmosphere is warm and inviting. A unique boutique hotel, 'CHST' is located in Camberwell with good bus connections to Central London.

Address: Church Street Hotel, 29-33 Camberwell Church Street, London, SE5 8TR  
Public Transport: Denmark Hill  
Phone: +44 207 703 5984  
Tickets: From £70  
Internet: [www.visitlondon.com/where-to-stay/place/1222202-church-street-hotel](http://www.visitlondon.com/where-to-stay/place/1222202-church-street-hotel)

### Travelodge London Kew Bridge

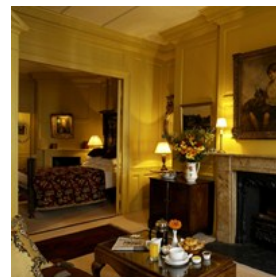


Located 1.5 miles from London's Royal Botanic Gardens and within walking distance of Kew Bridge Steam Museum and the River Thames, London Kew Bridge

Hotel is an affordable, comfortable location for a London stay. Choose from a double room or family room (with one or two pull-out beds). One of more than 20 Travelodge branches across London.

Address: Travelodge London Kew Bridge Hotel, North Road, High Street, Brentford, London TW8 0BD  
Public Transport: Kew Bridge  
Phone: + 44 871 984 6040  
Tickets: From £29  
Internet: [www.visitlondon.com/where-to-stay/place/440700-travelodge-london-kew-bridge](http://www.visitlondon.com/where-to-stay/place/440700-travelodge-london-kew-bridge)

### The Rookery



With its wood panelling, stone flag floors, open fires and 18-19th century art and antique furniture, The Rookery is more private club than hotel, with a warm, homely

atmosphere. Reconstructed from six Georgian houses that date back to 1764, the hotel is located in Clerkenwell, close to the Barbican arts centre, St Paul's and The City.

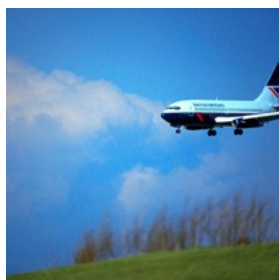
Address: The Rookery, Peter's Lane, Cowcross Street, London EC1M 6DS  
Public Transport: Farringdon, Barbican  
Phone: +44 20 7336 0931  
Tickets: From £155  
Internet: [www.visitlondon.com/where-to-stay/place/20913598-rookery](http://www.visitlondon.com/where-to-stay/place/20913598-rookery)

## ESSENTIAL INFORMATION



Navigate your way around London with ease using our top tips. From using London's public transport network to sending a postcard or charging your mobile, we've got it covered.

### Airport - London Heathrow



London Heathrow Airport is one of the busiest airports in the world, with five terminals (Terminal 2 is currently closed for renovations). There are various ways to travel from

Heathrow Airport to your destination. Hotel Hoppa and Hotel By Bus are shared ride services, transporting travellers to (and from) local and Central London hotels by coach. The quickest journey is by train on the Heathrow ExpressB, which runs every 15 minutes (from approximately 5am to 11.45pm) and gets you into Central London in 15 minutes for £20. You can also travel into Central London via Heathrow Connect (£9.50), the Piccadilly line on London Underground, a coach to Victoria Coach Station (£6), bus (£1.40 Oyster/£2.40 cash) or taxi (£50 to £80 in a metred black cab).

Address: Heathrow Airport, Hounslow, Middlesex

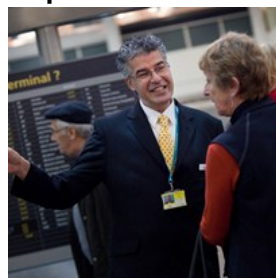
Public Transport: London Heathrow Airport Train Station

Opening hours: 24 hours

Phone: 0844 335 1801

Internet: [www.visitlondon.com/traveller-information/place/607575-london-heathrow-airport](http://www.visitlondon.com/traveller-information/place/607575-london-heathrow-airport)

### Airport - London Gatwick



London Gatwick Airport is the second largest airport in the UK (Heathrow Airport is the largest), with two terminals: North and South. The fastest route from the airport into

Central London is via the Gatwick Express, with trains departing every 15 minutes. The non-stop journey to Victoria Station takes 30 minutes and costs £19.90. Alternative travel options include going by First Capital Connect train to London Bridge, City Thameslink, Blackfriars, Farringdon or St Pancras International (£10 to St Pancras); Southern train services (£19.90 to Victoria Station), coach (£8), easyBus (£2 – online price) or taxi.

Address: Gatwick Airport, West Sussex RH6 0NP

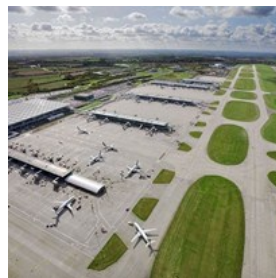
Public Transport: London Gatwick Airport Train Station

Opening hours: 24 hours

Phone: 0844 892 0322

Internet: [www.visitlondon.com/traveller-information/travel-to-london/airport/gatwick-airport](http://www.visitlondon.com/traveller-information/travel-to-london/airport/gatwick-airport)

### Airport - London Stansted



London Stansted Airport is the third busiest airport in the UK, and where many low-cost airlines serving Europe and the Mediterranean operate from. On the Stansted Express

you can reach Liverpool Street station in 47 minutes. Trains run every 15 minutes and the journey costs £23.40. You can also travel between Stansted Airport and Central London by coach with easyBus (£2 – online price), National Express (from £5) or Terravision (from £6). Alternatively book a minicab with 24x7 Stansted – note: black cabs do not operate from Stansted (though you can take one to the airport).

Address: Stansted Airport, Essex CM24 1RW

Public Transport: Stansted Airport Train Station

Opening hours: 24 hours

Phone: 0844 335 1803

Internet: [www.visitlondon.com/traveller-information/travel-to-london/airport/stansted-airport](http://www.visitlondon.com/traveller-information/travel-to-london/airport/stansted-airport)

### Airport - London Luton



London Luton Airport is located just 56km north-west of Central London, and is a popular base for low-cost airlines. A regular shuttle bus transports passengers from the airport to the nearest station, Luton Airport Parkway, which takes about 10 minutes. From the station you can catch an East Midlands Trains or First Capital Connect service to Central London in between 21 and 25 minutes (£13.50). Other options include the easyBusB express bus service (from £2 – online price), the Green Line 757 coach service to Victoria Coach Station (£17) and Terravision coaches to Victoria Coach Station (£15), each service stopping at different destinations en route. A metred taxi ride to or from Central London costs around £80.

Address: London Luton Airport, Luton, Bedfordshire LU2 9QT

Public Transport: Luton Airport Parkway

Opening hours: 24 hours

Phone: +44 1582 405100

Internet: [www.visitlondon.com/traveller-information/travel-to-london/airport/luton-airport](http://www.visitlondon.com/traveller-information/travel-to-london/airport/luton-airport)

### Airport - London City



London City Airport is a single runway airport located 9.5km east of Central London, and serving mainly short-haul and business flights. The airport is on the Docklands Light Railway, which connects to London's Tube network at Canning Town, Stratford and Bank and uses the same price structure. Buses serve the airport too, with the numbers 473 and 474 providing a connection to other East London destinations. You can also pick up a taxi from the cab rank outside the airport.

Address: London City Airport, Hartmann Road, London E16 2PX

Public Transport: London City Airport DLR Station

Opening hours: Mon-Fri 05:00-22:00, Sat 05:00-13:00, Sun 10:30-22:20

Phone: +44 20 7646 0088

Internet: [www.visitlondon.com/traveller-information/travel-to-london/airport/london-city-airport](http://www.visitlondon.com/traveller-information/travel-to-london/airport/london-city-airport)

### Public Transport - Bus



London's bus network stretches right across the capital, and provides a frequent and accessible service. If you're using an Oyster card, a single trip costs £1.40 – you simply 'tap in' when you get on the bus – and there is a daily cap of £4.40 if you're using only bus and tram services. A single bus fare is £2.40 if you're paying with cash. Seven-day, one-month and annual bus passes are also available. To navigate your way around the network, pick up a Central London Bus Guide from travel information centres at larger Tube stations or use Transport for London's online Journey Planner. A reduced service of night buses operates throughout the night, with most routes passing through Trafalgar Square. All children under 16 travel for free (with a photo card, though 5-15 year olds need to show a proof-of-age photo card). Freedom Passes allow disabled and older passengers to travel for free.

Internet: [www.visitlondon.com/traveller-information/getting-around-london/london-bus](http://www.visitlondon.com/traveller-information/getting-around-london/london-bus)

### Public Transport - Tube



There are 12 Underground or 'Tube' lines serving Greater London, which connect at various points to the Docklands Light Railway (DLR) and local rail network. The Tube usually operates from 5am to midnight from Monday to Saturday, with a reduced service on Sunday. Plan your route by picking up a free Tube map from any

Underground station, or using Transport for London's online Journey Planner. Fares vary depending on which of London's six travel 'zones' you travel through, though they are considerably cheaper with an Oyster card than buying paper tickets. Various concessions are available for children, students, the elderly and disabled travellers.

Internet: [www.visitlondon.com/traveller-information/getting-around-london/london-tube](http://www.visitlondon.com/traveller-information/getting-around-london/london-tube)

### Public Transport - Docklands Light Railway



The Docklands Light Railway (DLR) serves East London and connects with the Tube network at Bank, Tower Gateway (Tower Hill), Shadwell, Stratford, Bow,

Heron Quays, Canning Town and Canary Wharf. It also connects to the Emirates Air Line cable car at Royal Victoria. Fares are the same as on the Tube, and the DLR runs from 5.30am to 12.30am Monday to Saturday and from 7am to 11.30pm on Sunday. Fares are the same as those on the Tube, and Oyster and Travelcard holders can use the DLR.

Internet: [www.visitlondon.com/traveller-information/getting-around-london/docklands-light-railway-network](http://www.visitlondon.com/traveller-information/getting-around-london/docklands-light-railway-network)

### Public Transport - Thames River Bus



Travel from A to B with ease along the Thames on board a river bus. There are six different routes, which slight at destinations along the riverbank – between Putney

and Woolwich Arsenal. Popular services include Thames Clippers route between Hilton London Docklands Riverside and Canary Wharf, the Tate to Tate boat between Tate Britain and Tate Modern, and the journey between London Eye and historic Greenwich. Buy your ticket before boarding or on board (depending on the service) –

discounts are available with Travelcards and Oyster cards.

Internet: [www.visitlondon.com/traveller-information/getting-around-london/riverboat](http://www.visitlondon.com/traveller-information/getting-around-london/riverboat)

### Public Transport - Local Trains



As well as the Underground, London has its own local train network, which connects to the Tube at many points. The main train operators serving London are Silverlink, First

Capital Connect, SouthEastern Railway, Southern Railway, London Overground and Greater Anglia, with these local lines in turn linking to the national rail network and the Eurostar. You can use your Oyster card on all suburban trains stopping in Zones 1-9 – except Heathrow Express and a few other select services. Several different railcards are available too, providing discounted fares to their holders.

Internet: [www.visitlondon.com/traveller-information/getting-around-london/local-trains-in-london](http://www.visitlondon.com/traveller-information/getting-around-london/local-trains-in-london)

### Public Transport - Trams



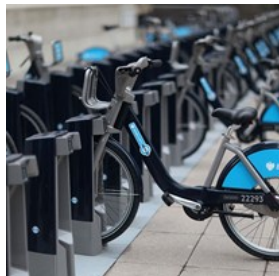
London's tram network, Tramlink, was introduced in 2000 and runs in selected parts of South London – between Wimbledon, Croydon, Beckenham and New

Addington. Trams run about every seven minutes to New Addington and every 10 minutes to Wimbledon, Elmers End and Beckenham Junction during the day from Monday to Saturday. Fares work the same as on buses, with a flat-rate cost of £1.40 with an Oyster card and £2.40 when paying by cash. Travelcards are also valid on trams, and bus passes include use of the tram network. Travelling via Tramlink is free for London students aged 16-17, under 16s and older and disabled residents carrying a relevant photo card.

Internet:

[www.visitlondon.com/traveller-information/getting-around-london/tram](http://www.visitlondon.com/traveller-information/getting-around-london/tram)

### Public Transport - Cycle Hire Scheme



Hop on a "Boris bike" and zip around London using the city's public bike-sharing scheme. Named after London's Mayor Boris Johnson, the popular blue bikes can be found in more than 550 bike docking stations across London – so you're never far away from one. After you've paid your registration fee (from £2), you can hire a bike for a day, week or even a year. The bikes are free to use for the first 30 minutes, with prices increasing according to how long you use the bike for then afterwards. When you've finished your journey, simply return the bike to your nearest docking station – you can find out where that is using the Barclays Bikes app.

Internet: [www.visitlondon.com/traveller-information/getting-around-london/london-cycle-hire-scheme](http://www.visitlondon.com/traveller-information/getting-around-london/london-cycle-hire-scheme)

### Public Transport - Emirates Air Line



Cross the Thames in style on board the Emirates Air Line, London's cable car connecting Greenwich Peninsula and the Royal Docks. As well as taking you across the river in less than 10 minutes, it provides an amazing bird's eye view over London and the Thames. The fare is £3.20 using Oyster pay-as-you-go, or you can buy a return journey (known as a '360° tour') for £6.40 from the terminals at either end of the line. Multi-journey boarding passes (£10 for 10 single trips) and private cabin packages are also available.

Address: Emirates Greenwich Peninsula, Greenwich, London, SE10 0FJ

Internet:

[www.visitlondon.com/things-to-do/place/25549367-emirates-air-line](http://www.visitlondon.com/things-to-do/place/25549367-emirates-air-line)

### Taxi



Riding in one of London's iconic black cabs is a must – and makes for a very comfortable and spacious ride. Hail a cab in the street or pick one up at a taxi rank. Your journey is calculated using a meter, with a minimum charge of £2.40. London also has many private hire vehicles and minicabs – these are unmetered so check the fare when booking. To find a local, reputable firm download Transport for London's free CabWise app or text CAB to 60835 to receive three numbers (two minicab and one black cab) by text. The Hailo smartphone app is another great way to find a black cab near you.

Internet:

[www.visitlondon.com/traveller-information/getting-around-london/taxis](http://www.visitlondon.com/traveller-information/getting-around-london/taxis)

### Post



Postage stamps are available across London from post offices, newsagents and supermarkets. To post a package or souvenirs, drop into any post-office – you can find your nearest branch on the Post Office website. Post offices are generally open Monday-Friday from 9.00am to 5.30pm and Saturday from 9.00am to 12.30pm.

Internet: [www.visitlondon.com/tag/post-office](http://www.visitlondon.com/tag/post-office)

### Pharmacy



When you need to buy medication over the counter or collect a prescription, simply head to one of London's many pharmacies. As well as private chemists, pharmacy services can be found at certain branches of Boots and Superdrug as well as some larger

supermarkets.

If you need urgent medical care, call NHS Direct on 111 (open 24 hours a day, 365 days a year) – only call London Ambulances Service on 999 if it's an emergency. NHS Direct can give you free medical advice and direct you to the nearest walk-in health centre or hospital accident and emergency departments.

Internet: [www.nhsdirect.nhs.uk](http://www.nhsdirect.nhs.uk)

## Telephone



The international dialling code for the UK is +44 or 0044, which replaces the first 'zero' of the phone number. So, for example, to call the number 020 7946 0000 from abroad you would dial +44 20 7946 0000.

The area codes for London are (020) 7, (020) 8 and (020) 3. If you're dialling a London number from another fixed phone line within Greater London you don't need to dial the '020' before the number, just the rest of the number starting with 7, 8 or 3.

Internet: [www.visitlondon.com/traveller-information/essential-information/mobile-phones](http://www.visitlondon.com/traveller-information/essential-information/mobile-phones)

## Electricity



Electrical appliances are connected to the UK mains supply using a three-pin plug, which slots into a wall socket. This socket can be turned on and off, unlike in many other countries.

The average voltage of a UK power socket is 230v or slightly higher, so check the voltage of your device before plugging it in. Voltage adaptors and converters are

available from London airports and high-street electrical chains such as Argos or Curry's.

Power sockets are available at many coffee shops with WiFi and on some overland trains. Need to charge your mobile? Download the 'find-a-chargebox' iPhone app to find your nearest ChargeBox.

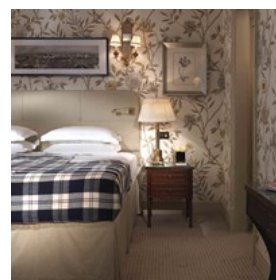
Internet: [www.visitlondon.com/traveller-information/essential-information/electricity](http://www.visitlondon.com/traveller-information/essential-information/electricity)

## ROMANTIC IDEAS



Every day can be Valentine's Day in London. Romantic couples can share delicious meals, enjoy entertaining distractions, and soak up beautiful views of the city together.

### Romantic Hotels



From cosy boutique hotels, to grand luxury accommodation, London has the most romantic settings for couples. How about a hotel spa treatment for two? Or a room with a view over Tower Bridge? Or a hotel near the West End's best theatres and restaurants?

Internet: [www.visitlondon.com/where-to-stay/hotel/romantic-hotels-london](http://www.visitlondon.com/where-to-stay/hotel/romantic-hotels-london)

### Romantic Restaurants



From restaurants high above the city, to cosy restaurants with intimate tables and fantastic wines, London has a wide variety of options for romantic couples. Discover a

great place for your wedding proposal or special anniversary celebration.

Internet: [www.visitlondon.com/things-to-do/food-and-drink/restaurant/best-romantic-restaurants](http://www.visitlondon.com/things-to-do/food-and-drink/restaurant/best-romantic-restaurants)

### Romantic Weekend Itinerary



Stay in a romantic hotel, book at a cosy restaurant, check out some breathtaking views, stop off for afternoon tea and catch a West End show.

However you like to share your weekend in London together, you'll find plenty of inspiration all over town. Remember there's always time for champagne too.

Internet: [www.visitlondon.com/things-to-do/sightseeing/one-day-itineraries/romantic-weekend-itinerary](http://www.visitlondon.com/things-to-do/sightseeing/one-day-itineraries/romantic-weekend-itinerary)

### Catch a West End Show



Book tickets to see Shakespeare in Love, Phantom of the Opera, Miss Saigon or any other great West End production, and share a romantic cocktail,

glass of champagne or delicious restaurant meal before (and after?) with your loved one.

Internet: [www.visitlondon.com/things-to-do/whats-on/theatre/top-shows-for-valentines-day](http://www.visitlondon.com/things-to-do/whats-on/theatre/top-shows-for-valentines-day)

### Romantic Afternoon Tea



Spend the afternoon living the life of luxury in a traditional London setting over a pot of fresh tea, delicate finger sandwiches, and scones with jam and cream. It doesn't get much more romantic than this.

Internet: [www.visitlondon.com/things-to-do/food-and-drink/afternoon-tea](http://www.visitlondon.com/things-to-do/food-and-drink/afternoon-tea)

### Population

8.3 million

### Currency

British pounds, £1 = 100 pence

### Opening hours

Typical opening hours are Monday-Saturday 9.00-17.30. Many department stores stay open till 18.00, some till 19.00 or 20.00 on Wednesdays or Thursdays. Larger shops are often open 10.00-18.00 on Sundays.

### Internet

[www.visitlondon.com](http://www.visitlondon.com)

### Newspapers

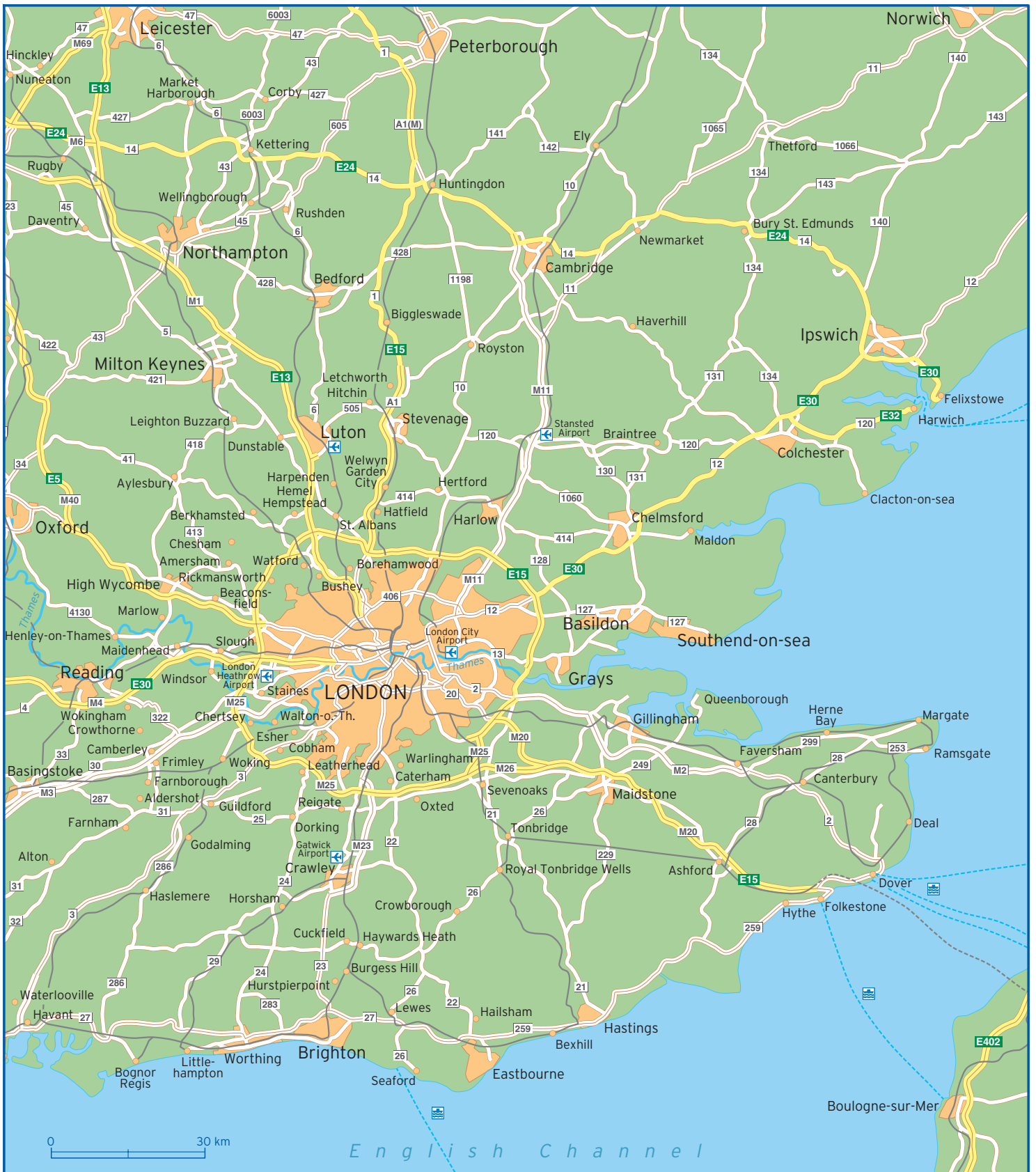
The Times  
The Telegraph  
The Guardian  
Daily Mail  
The Independent  
London Evening Standard

### Emergency numbers

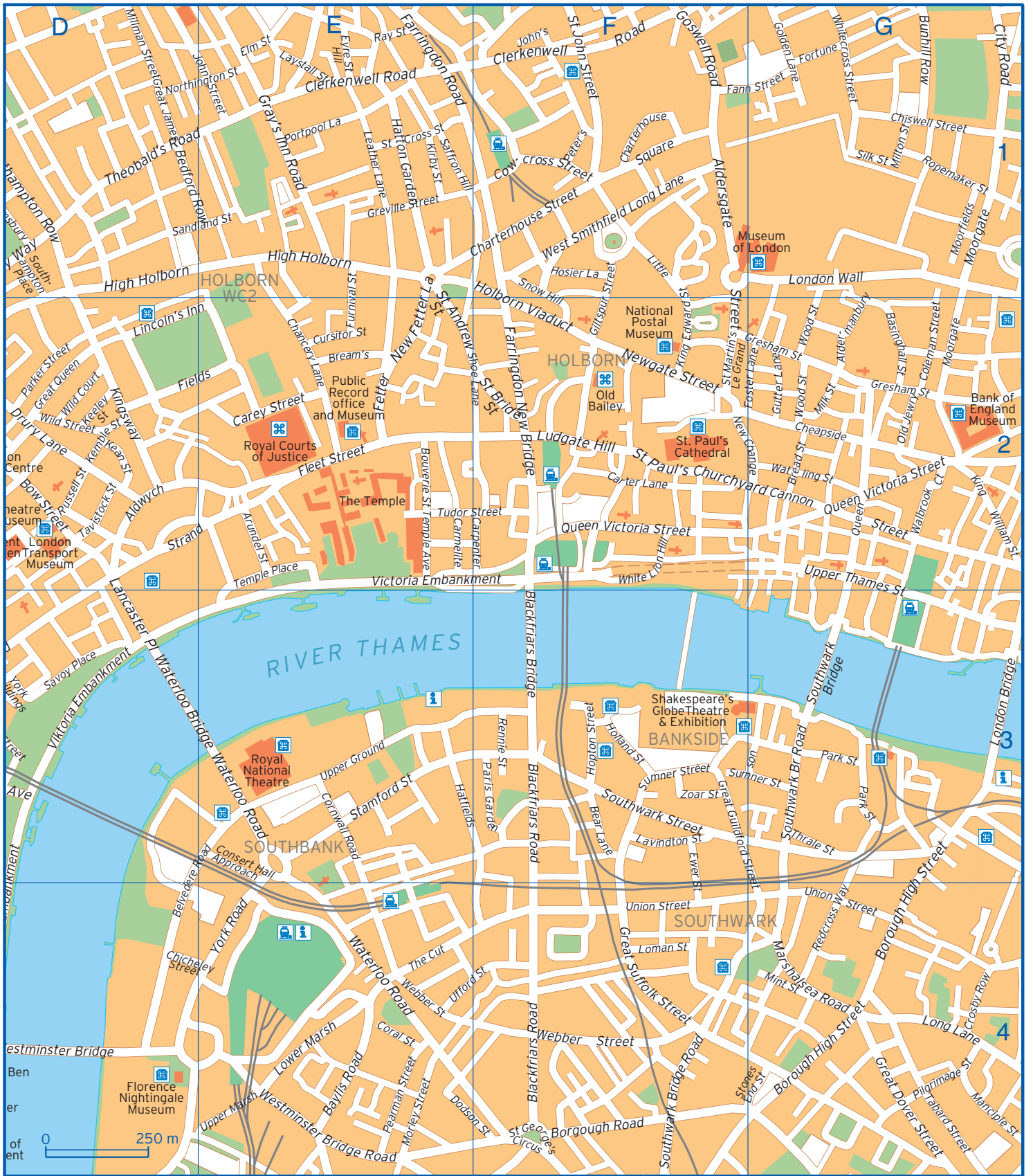
999

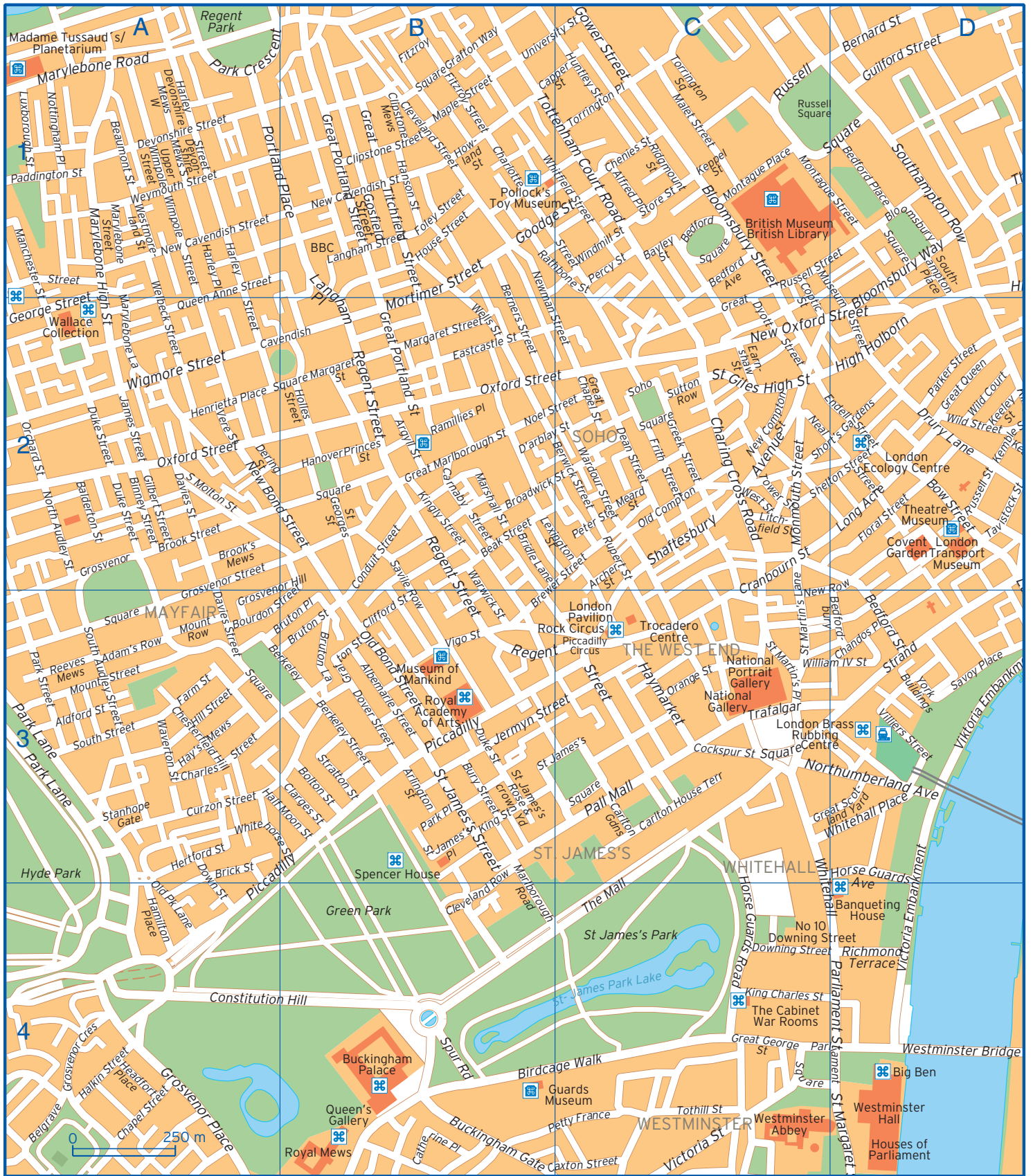
### Tourist information

City Information Centre  
St. Paul's Churchyard,  
London,  
EC4M 8BX  
+44 20 7332 1456  
[www.visitlondon.com](http://www.visitlondon.com)









Adam's Row	A3	Broadwick Street	B2 C2	Cranbourn Street	C2 C3
Albemarle Street	B3	Brook Street	A2	Crosby Row	G4
Aldermanbury	G2	Brook's Mews	A2	Cursitor Street	E2
Aldersgate Street	F1	Bruton Lane	B3	Curzon Street	A3
Aldford Street	A3	Bruton Place	A3 B3	Davies Street	A2 A3
Aldwych	D2	Bruton Street	B3	Dean Street	C2
Alfred Place	C1	Buckingham Gate	B4	Dering Street	A2
Archer Street	C2	Bunhill Row	G1	Devonshire Mews South	A1
Argyll Street	B2	Bury Street	B3	Devonshire Mews West	A1
Arlington Street	B3	Cannon Street	G2	Devonshire Street	A1
Arundel Street	E2	Capper Street	B1 C1	Dodson Street	E4 F4
Balderton Street	A2	Carey Street	E2	Doughty Street	D1
Bayley Street	C1	Carlton Gardens	C3	Dover Street	B3
Baylis Road	E4	Carlton House Terrace	C3	Down Street	A3 A4
Beak Street	B2	Carmelite Street	E2	Downing Street	C4
Bear Lane	F3	Carnaby Street	B2	Drury Lane	D2
Beaumont Street	A1	Carter Lane	F2	Drury Lane	D2
Bedford Ave	C1	Catherine Place	B4	Duke Street	A2 B3
Bedford Place	D1	Cavendish Square	A2 B2	D'arblay Street	B2 C2
Bedford Row	D1 E1	Caxton Street	B4 C4	Earnshaw Street	C2
Bedford Square	C1	Chancery Lane	E2	Eastcastle Street	B2
Bedford Street	D3	Chandos Place	D3	Elm Street	E1
Bedfordbury	D3	Chapel Street	A4	Emerson Street	G3
Belgrave Square	A4	Charing Cross Road	C2	Endell Street	C2 D2
Belvedere Road	D4 E3	Charles Street	A3	Ewer Street	F3 F4
Berkeley Square	A3 B3	Charlotte Street	B1	Eyre Street Hill	E1
Berkeley Street	B3	Charterhouse Square	F1	Fann Street	F1 G1
Bernard Street	D1	Charterhouse Street	E1 F1	Farm Street	A3
Berners Street	B1 B2	Chenies Street	C1	Farringdon New Bridge	F2
Berwick Street	B2 C2	Chesterfield Hill	A3	Farringdon Road	E1
Binney Street	A2	Chicheley Street	D4 E4	Fetter Lane	E2
Birdcage Walk	B4 C4	Chiswell Street	G1	Fitzroy Square	B1
Blackfriars Bridge	F2 F3	City Road	G1	Fitzroy Street	B1
Blackfriars Road	F3 F4	Clarges Street	B3	Fleet Street	E2
Bloomsbury Square	D1	Clerkenwell Road	E1 F1	Floral Street	D2
Bloomsbury Street	C1	Cleveland Row	B3 B4	Foley Street	B1
Bloomsbury Way	D1 D2	Cleveland Street	B1	Fortune Street	G1
Bolton Street	B3	Clifford Street	B3	Foster Lane	G2
Bonhill Street	G1	Clipstone Mews	B1	Frith Street	C2
Borgough Road	F4	Clipstone Street	B1	Furnival Street	E1 E2
Borough High Street	G3 G4	Cockspur Street	C3	George Street	A2
Bourdon Street	A3 B2	Coleman Street	G2	Gilbert Street	A2
Bouverie St Temple Avenue	E2	Conduit Street	B2	Giltspur Street	F1 F2
Bow Street	D2	Consert Hall Approach	E3	Gloucester Terrace	D2 E2
Bread Street	G2	Constitution Hill	A4 B4	Golden Lane	G1
Bream's Buildings	E2	Coptic Street	C1 C2	Goodge Street	B1 C1
Brewer Street	B3 C2	Coral Street	E4	Gordon Square	C1
Brick Street	A3	Cornwall Road	E3	Gosfield Street	B1
Bridle Lane	B2	Cowcross Street	F1	Goswell Road	F1

Gower Street	C1	Hosier Lane	F1	Marylebone Road	A1
Grafton Street	B3	House Street	B1	Marylebone Street	A1
Grafton Way	B1	Howland Street	B1	Meard Street	C2
Gray's Inn Road	E1	Huntley Street	C1	Milk Street	G2
Great Chapel Street	C2	James Street	A2	Millman Street	D1
Great Dover Street	G4	Jermyn Street	B3 C3	Milton Street	G1
Great George Street	C4	John Carpenter Street	E2 F2	Mint Street	G4
Great Guildford Street	F3 G4	John Street	D1 E1	Monmouth Street	C2
Great James Street	D1	Kean Street	D2	Montague Place	C1
Great Marlborough Street	B2	Keeley Street	D2	Montague Street	C1 D1
Great Portland Street	B1 B2	Kemble Street	D2	Moorgate	G1 G2
Great Queen	D2	Keppel Street	C1	Morley Street	E4
Great Russell Street	C2	King Charles Street	C4	Mortimer Street	B1 B2
Great Scotland Yard	C3 D3	King Edward Street	F1 F2	Mount Row	A3
Great Suffolk Street	F4	King Street	B3	Mount Street	A3
Great Titchfield Street	B1	King William St	G2	Museum Street	C1 D2
Greek Street	C2	Kingly Street	B2	Neal Street	C2
Gresham Street	F2 G2	Kingsway	D2	New Bond Street	A2 B2
Greville Street	E1	Kirby Street	E1	New Cavendish Street	A1 B1
Grosvenor Crescent	A4	Lambeth Place Road	D4	New Compton Street	C2
Grosvenor Hill	A3 B2	Lancaster Place	D2 D3	New Fetter Lane	E1 E2
Grosvenor Place	A4	Langham Place	B1 B2	New Oxford Street	C2 D2
Grosvenor Square	A2	Langham Street	B1	New Row	C3 D2
Grosvenor Street	A2 A3	Lavindton Street	F3	Newgate Street	F2
Guilford Street	D1	Laystall Street	E1	Newman Street	B1 C2
Gutter Lane	G2	Leather Lane	E1	Noel Street	B2 C2
Half Moon Street	A3 B3	Lexington Street	B2 C2	North Audley Street	A2
Halkin Street	A4	Lincoln's Inn Fields	D2 E2	Northington Street	D1 E1
Hamilton Place	A4	Litchfield Street	C2	Northumberland Avenue	C3 D3
Hanover Square	B2	Little Britain	F1	Nottingham Place	A1
Hanson Street	B1	Loman Street	F4	Old Bond Street	B3
Harley Place	A1	London Bridge	G3	Old Compton	C2
Harley Street	A1	London Wall	G1	Old Jewry	G2
Harper Road	G4	Long Acre	D2	Old Park Lane	A4
Hatfields	E3	Long Lane	G4	Orange Street	C3
Hatton Garden	E1	Lower Marsh	E4	Orchard Street	A2
Haymarket	C3	Ludgate Hill	F2	Oxford Street	A2 B2
Hay's Mews	A3	Luxborough Street	A1	Paddington Street	A1
Headfort Place	A4	Malet Street	C1	Pall Mall	C3
Henrietta Place	A2	Manchester Street	A1 A2	Paris Garden	F3
Hertford Street	A3	Manciple Street	G4	Park Crescent	A1 B1
High Holborn	D1 D2 E1	Maple Street	B1	Park Lane	A3
Hill Street	A3	Marchmont Street	D1	Park Place	B3
Holborn Viaduct	E1 F2	Margaret Street	B2	Park Street	A3
Holland Street	F3	Marlborough Road	B3 B4	Park Street	G3
Holles Street	B2	Marshall Street	B2	Parker Street	D2
Hopton Street	F3	Marshalsea Road	G4	Parliament Square	C4 D4
Horse Guards Avenue	D3 D4	Marylebone High Street	A1 A2	Parliament Street	D4
Horse Guards Road	C3 C4	Marylebone Lane	A1 A2	Pearman Street	E4

Percy Street	C1	Southwark Street	F3	University Street	B1 C1
Peter Street	C2	Spur Road	B4	Upper Ground	E3
Peter's Lane	F1	St Andrew Street	E1 E2	Upper Marsh	E4
Petty France	B4 C4	St Ann's Street	C4	Upper Thames Street	G2 G3
Phoneix Place	E1	St Bride Street	F2	Vere Street	A2
Piccadilly	A4 B3	St Cross Street	E1	Victoria Embankment	D3 D4 E2 F2
Pilgrimage Street	G4	St Georges Street	B2	Victoria Street	C4
Portland Place	A1 B1	St George's Circus	F4	Vigo Street	B3
Portpool Lane	E1	St Giles High Street	C2	Viktoria Embankment	D3
Princes Street	B2	St James's Place	B3	Villiers Street	D3
Queen Anne Street	A1 A2	St James's Rose & crown Yard	B3	Walbrook Court	G2
Queen Street	G2	St James's Square	B3 C3	Wardour Street	C2
Queen Victoria Street	F2 G2	St James's Street	B3	Warwick Street	B2 B3
Ramillies Place	B2	St John Street	F1	Waterloo Bridge	D3 E3
Rathbone Street	B1 C1	St John's Square	F1	Waterloo Road	E3 E4
Ray Street	E1	St Margaret Street	D4	Watling Street	G2
Redcross Way	G4	St Margaret Street	D4	Waverton Street	A3
Reeves Mews	A3	St Martin's Lane	C2 C3	Webber Street	E4 F4
Regent Street	B2 B3 C3	St Martin's Le Grand	F2	Welbeck Street	A1 A2
Rennie Street	F3	St Martin's Place	C3	Wells Street	B2
Richmond Terrace	D4	St Paul's Churchyard	F2	West Smithfield Long Lane	F1
Ridgmount Street	C1	Stamford Street	E3	West Street	C2
Ropemaker Street	G1	Stanhope Gate	A3	Westminster Bridge	D4
Rupert Street	C2	Stones End Street	G4	Westminster Bridge Road	E4
Russell Square	C1	Store Street	C1	Westmoreland Street	A1
Russell Street	D2	Strand	D2 D3 E2	Weymouth Street	A1
Saffron Hill	E1	Stratton Street	B3	White Lion Hill	F2
Sandland Street	D1 E1	Sumner Street	F3 G3	Whitecross Street	G1
Savile Row	B2 B3	Sutton Row	C2	Whitehall	C3 C4
Savoy Place	D3	Tabard Street	G4	Whitehall Place	C3 D3
Shaftesbury Avenue	C2	Tavistock Street	D2	Whitehorse Street	A3 B3
Shelton Street	C2 D2	Temple Place	E2	Whitfield Street	B1 C1
Shoe Lane	E2	The Mall	C4	Wigmore Street	A2
Short's Gardens	C2 D2	Theobald's Road	D1	Wild Court	D2
Silk Street	G1	Thrale Street	G3	Wild Street	D2
Snow Hill	F1 F2	Torrington Place	C1	William IV Street	C3 D3
Soho Square	C2	Torrington Square	C1	Wimpole Street	A1
South Audley Street	A3	Tothill Street	C4	Windmill Street	C1
South Molton Street	A2	Tottenham Court Road	B1 C1	Wood Street	G2
South Street	A3	Tower Street	C2	York Bridge	A1
Southampton Place	D1	Trafalgar Square	C3	York Buildings	D3
Southampton Row	D1	Tudor Street	E2 F2	York Road	E4
Southwark Bridge	G3	Ufford Street	E4 F4	Zoar Street	F3
Southwark Bridge Road	F4 G3	Union Street	E4 F4 G4		